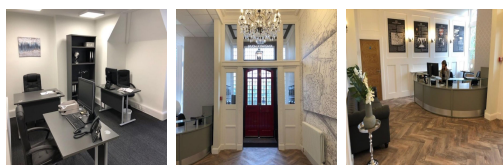


Serviced Office Space UK

Kingswick Drive

Ascot SL5 7BH



The workspace is situated just a 5-minute walk to the village high street for convenience shops, cafe's, restaurants and post office. There are two-way access to reach this place which is by car or public transport as such as taxi, train and bus. Fantastic transport links are available due to the central location of this space. Good rail links with a 5-10-minute drive to Ascot or Sunningdale station. Just 15-20-minute drive to Heathrow Airport. Located 1.3 miles from Ascot Racecourse. Easy road access to the M4, M3 and M25. There is ample free parking to the rear of the property which is available to all tenants.

The workspace is a converted Victorian Mansion house, based in Sunninghill, Ascot. Over the past year the building has undergone complete modernization internally, giving tenants high quality offices with convenient access to motorways, rail networks and the local shops. Friendly reception staff are on hand to support you and your guests with any assistance you may require. Services include cleaning, facilities maintenance, security, professionally staffed reception, 24/7 access, tea and coffee facilities. Additional services available, administrative support, IT support, and high-speed broadband. Short- and long-term lease available.

transport links

Underground	N/A
Train Station	Martins Heron
Road Link	M3 Jct 3
Airport	Heathrow Airport

Virtual Office

- **Price** : Â£50 pcm
- **Min Price** : Â£50 pcm
- **Min Term** : 3 mnths
- **Max Term** : 12 mnths