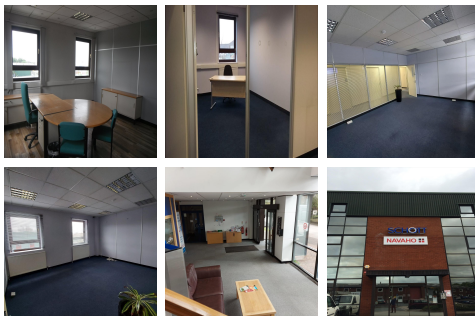
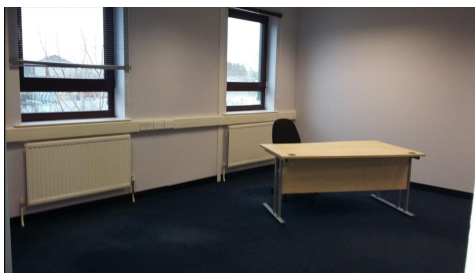


Serviced Office Space UK

Drummond Road

Stafford ST16 3EL



Located in Drummond Road. There are two-way access to reach this place which is by car or public transport as such as taxi, Metro train and bus. Fantastic transport links are available due to the central location of this space. One mile north from Stafford Town Centre. and Junction 14 of the M6 Motorway is two miles distant providing access to Manchester and the north-west, London and the south-east by way of the M1 link and Bristol and the south-west through its connection with the M5. Stafford's mainline station provides Intercity connections throughout the national rail network.

The property forms part of a complex and comprises an impressive three-storey headquarters building of flat-roofed construction with brick, glazed and clad elevations, provides office accommodation at ground, first and second floor levels accessed through an impressive entrance hall and divided into a number of suites that can be divided to provide smaller rooms or merged to provide larger suite, to suit requirement. The suites are made up of a few cellular offices accessed off central corridors with suspended ceilings, Category 2 lighting, carpets and blinds fitted and shared use of male and female WC facilities. The workspace allows clients to have 24 hours access in 7 days out of every week with electronic access with personal access codes.

transport links

Underground	N/A
Train Station	Stafford
Road Link	N/A
Airport	Birmingham Airport

Leased Spaces

- **Price** : Â£2 pcm
- **Min Price** : Â£2 pcm
- **Min Size** : 2 sq ft
- **Max Size** : 10 sq ft
- **Total Size** : 3397 sq ft
- **Min Term** : 6 mnths
- **Max Term** : 12 mnths