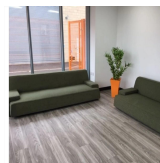
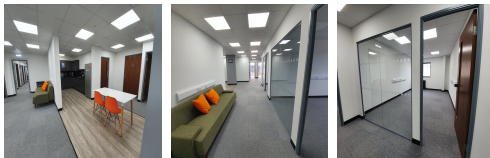


Serviced Office Space UK

821 Bath Road

Bristol BS4 5NL



This centre is just a minute's walk to Brislington Retail Park with all other major high street retail brands. This centre is just outside the facility on Emery Road. The local bus stop services 39, 178, 349, 435, 668, and A4 Air Decker. This centre is just 10 minutes from Bristol Temple Meads Train Station by bus and a 4-minute walk from Brislington Park and Ride. The centre is in the south of the city so this centre is easily accessible to Bristol Airport by car, bus or taxi. Many restaurants, cafes, shopping centres, and other local amenities are close to this centre.

The workspace is one of the brand-new office developments built in 2020. It comprises 15 high-spec office suites which can accommodate a variety of businesses, from fledgling to blue-chip companies. Offices range from 1 to 6 people. This centre can provide an atmosphere for both professional and practical. The centre offers several facilities, such as high-speed internet, professional meeting rooms, concierge services, mail handling, business-class printers, a beautiful kitchen, and professional-grade daily cleaning. This building is a wonderland for all things digital – providing an ever-expanding hub of creatives with never-ending networking opportunities.

transport links

Underground	N/A
Train Station	Keynsham
Road Link	N/A
Airport	Bristol Airport

Serviced Offices

- **Price** : Â£154 pcm
- **Min Price** : Â£154 pcm
- **Min Size** : 1 wkstns
- **Max Size** : 6 wkstns
- **Total Size** : 52 wkstns
- **Min Term** : 6 mnths
- **Max Term** : 12 mnths