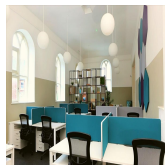
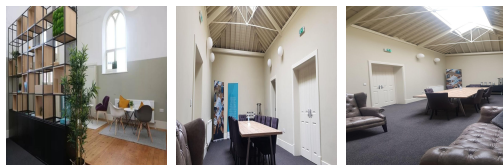


Serviced Office Space UK

8a Parr Street

Poole BH14 0JY



The workspace is within the space headquarters at the beautiful Old Saint Peter's School in Ashley Cross, Poole. The tannery benefits from excellent transport links via bus, train and proximity to Bournemouth Airport. There is parking available at the centre. Fantastic transport links are available due to the central location of this space. Many restaurants, cafes, shopping centres, and other local amenities are close to this centre. The regional transport links are also excellent and provide all prospective tenants with a range of frequent and convenient services throughout the area.

This space is warm and welcoming, so clients can feel at home while at work. The coworking space features 20 workstations for rent every month, two breakout areas with couches for informal meetings, a kitchen with all modern appliances, and a large meeting room with a skylight. In addition, the workspace allows clients to have 24-hour access in 7 days of the week. There are lounges and breakout areas where clients can take a break during a hectic workday. Perfect for individuals and small start-up teams who are getting off the ground. These offer plenty of space for unique events or a well-deserved lunch break.

transport links

Underground	N/A
Train Station	Parkstone
Road Link	N/A
Airport	Bournemouth Airport

Coworking Spaces

- **Price** : £240 pcm
- **Min Price** : £240 pcm
- **Total Size** : 20 wkstns
- **Min Term** : 1 mnths
- **Max Term** : 12 mnths