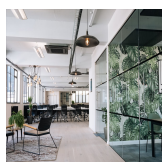
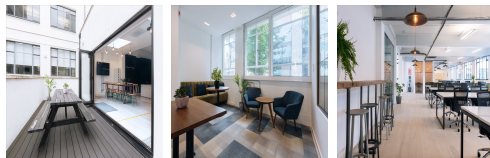


Serviced Office Space UK

32-38 Scrutton Street

London EC2A 4RQ



This centre is in the heart of London. This centre is the newest London location and has restaurants, coffee shops and boutiques, sandwiched between Great Eastern Street and Curtain Road. This building also benefits from Old Street and Liverpool Street stations convenience under 8 minute's walk from the office. There is a two-way to access the workspace by car or public transport such as taxi, metro train, and bus. There is free parking available at the centre. The centre is accessible from almost every transport link, placing tenants and their teams in a well-connected and easily accessible location.

The beautifully designed office spaces empower teams and companies for growth, with high ceilings and large windows that provide natural lighting. Members enjoy the privacy of their self-contained floors with breakout areas, meeting rooms and kitchens. The centre offers several facilities like concierge services, mail handling, business-class printers, and professional-grade daily cleaning. This building is a wonderland for all things digital - providing an ever-expanding hub of creatives with never-ending networking opportunities. This amenity-rich complex is the perfect location for any business seeking a modern workspace to thrive.

transport links

Underground	Old Street
Train Station	Liverpool Street Station
Road Link	N/A
Airport	London City Airport

Serviced Offices

- **Price** : Â£700 pcm
- **Min Price** : Â£700 pcm
- **Min Size** : 28 wkstns
- **Max Size** : 82 wkstns
- **Total Size** : 544 wkstns
- **Min Term** : 6 mnths
- **Max Term** : 24 mnths