

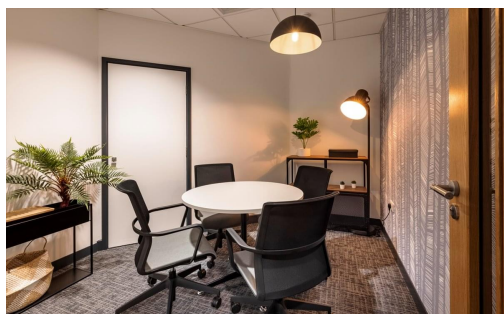
Serviced Office Space UK

Lakeside Drive

Warrington WA1 1RW



The building is in Centre Park, with stunning views across the lake. Village Hotel and Starbucks are in the park, and the town centre is a short walk away, providing excellent further amenities and transport connections. The business centre is well positioned, less than 0.5 miles south of Warrington town centre and equidistant from the M6, M62 and M56 Motorways. There is two-way access to this place by car or public transport such as taxi, metro train, and bus. There is parking available at the centre.



This building is a wonderland for all things digital – providing an ever-expanding hub of creatives with never-ending networking opportunities. This thoughtfully designed workspace incorporates lush interiors and best-in-class services and amenities to provide tenants with the most productive day at work. This business centre provides fully furnished offices with high-speed internet, parking space, meeting space, professional-grade daily cleaning services, IT support and telecom services, kitchen facilities, and much more. The centre is accessible 24 hours a day so the clients can work flexibly.



transport links

Underground	N/A
Train Station	Warrington Bank Quay
Road Link	N/A
Airport	Liverpool John Lennon Airport

Serviced Offices

- **Price** : Â£149 pcm
- **Min Price** : Â£149 pcm
- **Min Size** : 1 wkstns
- **Max Size** : 50 wkstns
- **Total Size** : 50 wkstns
- **Min Term** : 3 mnths
- **Max Term** : 12 mnths