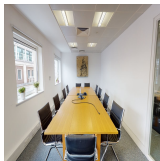
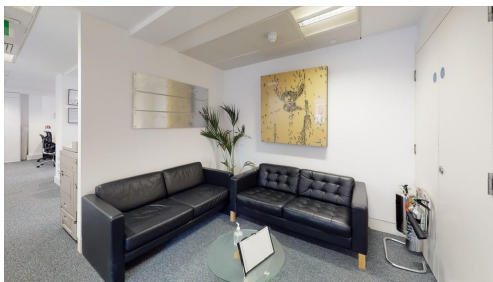


Serviced Office Space UK

7-8 Savile Row

London W1S 3PE



Saville Row is based in Mayfair, a short walk from Bond Street, Piccadilly Circus, and Oxford Circus underground stations this office offers great transport links. Additionally, you will be located a short walk from the restaurants and bars the surrounding areas have to offer. There are two-way access to reach this place which is by car or public transport as such as taxi, Metro train and bus. Fantastic transport links are available due to the central location of this space. The centre is surrounded by an array of hotels, restaurants and cafes.

Saville Row is Located in Mayfair. This office space is a Modern, self-contained fifth floor office. Comprising predominantly of open-plan office space this also includes a reception area, boardroom, two meeting rooms, private office, breakout area, space for hot desks, air conditioning and kitchenette. Currently configured to offer 26 desks. The workspace provides everything members need to thrive at work along with some cool amenities. The whole floor benefits from an abundant amount of natural light from the floor to ceiling windows overlooking the courtyard, raised access flooring and air conditioning. Perfect for individuals and small start-ups teams who are getting off the ground.

transport links

Underground	Green Park
Train Station	Charing Cross Station
Road Link	N/A
Airport	London City Airport

Serviced Offices

- **Price** : Â£650 pcm
- **Min Price** : Â£650 pcm
- **Min Size** : 26 wkstns
- **Max Size** : 26 wkstns
- **Total Size** : 26 wkstns
- **Min Term** : 12 mnths
- **Max Term** : 60 mnths