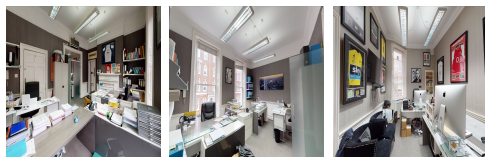
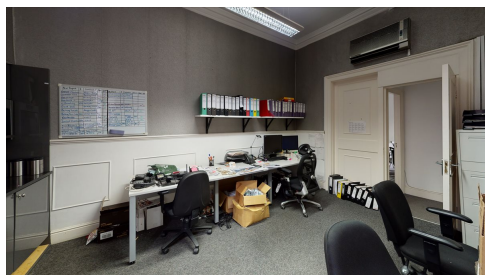


Serviced Office Space UK

42 Manchester Street

London W1U 7LW



Manchester Street is an attractive street in the heart of Marylebone within close proximity to both Baker Street and Marylebone High Street. The building is ideally placed for all the shopping and restaurant facilities which this vibrant part of London has to offer. There are two-way access to reach this place which is by car or public transport as such as taxi, Metro train and bus. Fantastic transport links are available due to the central location of this space. There is parking available at the centre. The centre is surrounded by an array of hotels, restaurants and cafes.

The workspace has a professional and spacious serviced office. Comprises of the entire first and lower ground floors of traditional Georgian terrace building. The first-floor benefits from 4 meeting rooms, comfort cooling, period features and excellent natural light. Perfect for individuals and small start-ups teams who are getting off the ground. All-inclusive costs on a monthly basis. The workspace provides everything members need to thrive at work along with some cool amenities. In addition, the workspace allows clients to have 7 days reception. This centre offers members the opportunity to boost their professional image and client experiences with the advantage of flexible terms that best fits your business's needs.

transport links

Underground	Baker Street Station
Train Station	Charing Cross Station
Road Link	N/A
Airport	London City Airport

Serviced Offices

- **Price** : £678 pcm
- **Min Price** : £678 pcm
- **Min Size** : 14 wkstns
- **Max Size** : 14 wkstns
- **Total Size** : 14 wkstns
- **Min Term** : 12 mnths
- **Max Term** : 60 mnths