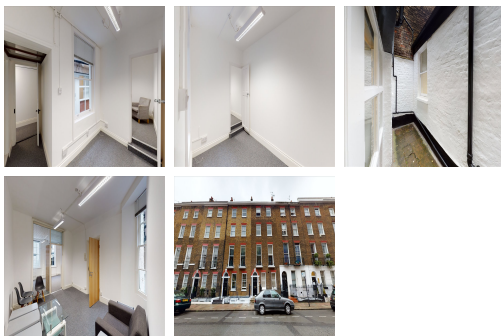


# Serviced Office Space UK

---

## 42 Manchester Street

London W1U 7LW



Manchester Street is an attractive street in the heart of Marylebone near both Baker Street and Marylebone High Street. The building is ideally placed for all the shopping and restaurant facilities which this vibrant part of London has to offer. There are two-way access to reach this place which is by car or public transport as such as taxi, Metro train and bus. Fantastic transport links are available due to the central location of this space. There is parking available at the centre. The centre is surrounded by an array of hotels, restaurants and cafes.

This bright lower ground floor premises comprises of 675 sq. ft, that fits 10 desks, 2 hot desks, a meeting room, breakout area, toilet, and ample storage space. All-inclusive costs on a monthly basis. The workspace provides everything members need to thrive at work along with some cool amenities. In addition, the workspace allows clients to have 7 days reception. The whole floor benefits from an abundant amount of natural light from the floor to ceiling windows overlooking the courtyard, raised access flooring and air conditioning. Perfect for individuals and small start-ups teams who are getting off the ground.

### transport links

<b>Underground</b>	Baker Street Station
<b>Train Station</b>	Charing Cross Station
<b>Road Link</b>	N/A
<b>Airport</b>	London City Airport

### Serviced Offices

---

- **Price** : Â£500 pcm
- **Min Price** : Â£500 pcm
- **Min Size** : 10 wkstns
- **Max Size** : 10 wkstns
- **Total Size** : 10 wkstns
- **Min Term** : 12 mnths
- **Max Term** : 60 mnths