

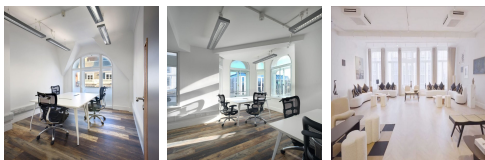
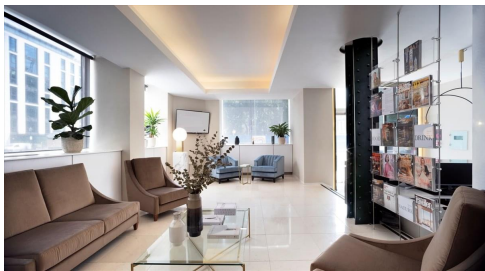
# Serviced Office Space UK

## 14 Hanover Square

London W1S 1HN



This centre is becoming the primary location for a Mayfair office at a growing speed, with Oxford Circus and Bond Street tube stations a three-five-minute walk, just off the shopping hub of Oxford Street. Brook Mews and Avery Row are directly behind the office, giving tenants access to the fantastic range of celebrated restaurants. The centre is accessible from almost every transport link, placing tenants and their teams in a well-connected and easily accessible location. This centre is conveniently located and boasts excellent transport links as well.



The centre has six floors and a mezzanine accommodating meeting room and lounge space. The workspace offers various business solutions, including serviced offices and meeting rooms. Office space is designed to generate efficient and lasting connections with people, projects, and the environment. The workspace reception is open 24 hours a day. Each floor pays respect to a different epoch of avant-garde architecture. Throughout the building, victorian romanticism and 20s art-deco glamour seamlessly blend with sleek modern finishes. The centre has a high-speed WIFI connection so the tenants can work smoothly without facing any internet-related issues. The centre is accessible 24 hours a day, allowing tenants to work flexibly.

### transport links

<b>Underground</b>	Oxford Circus Underground Station
<b>Train Station</b>	Oxford Circus Underground Station
<b>Road Link</b>	N/A
<b>Airport</b>	London City Airport

### Serviced Offices

- **Price** : Â£1300 pcm
- **Min Price** : Â£1300 pcm
- **Min Size** : 2 wkstns
- **Max Size** : 14 wkstns
- **Total Size** : 325 wkstns
- **Min Term** : 3 mnths
- **Max Term** : 36 mnths