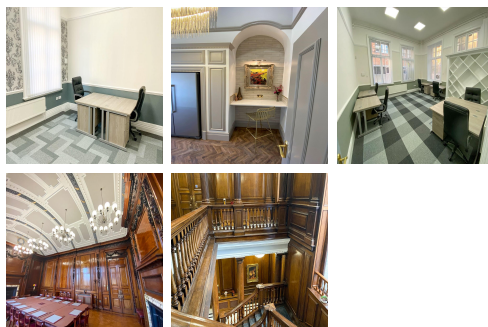


Serviced Office Space UK

Saint Thomas Street

Sunderland SR1 1NW



The workspace is at Saint Thomas Street. The A19 also gives direct access to Sunderland and Newcastle Upon Tyne to the north and York to the south. Local train services connect Darlington with the main East Coast Inter-City routes, connecting to London Kings Cross(2 hours 40 minutes) and Edinburgh. There is two-way access to this place by car or public transport such as taxi, Metro train, and bus. Fantastic transport links are available due to the central location of this space. The surrounding area offers a wide range of eateries, and amenities like banks and retail shops, providing tenants with everything at their doorstep.

The offices can accommodate teams of different sizes. Also, the workspace is available in the short term or long term. All offices come equipped with state-of-the-art Fibre Optic Broadband, phone systems, desks, chairs, drawers, and full-time reception with administration support. It is fully furnished with extremely high-quality fixtures and fittings and is available on an all-inclusive monthly package. There are lounges and breakout areas where tenants can take a break during a hectic workday. The refined design and stunning landmark architecture are locally renowned as a commercially significant business establishment incorporating a neutral palette, international style, and industrial materials to create an elegant and fun workspace.

transport links

Underground	Sunderland
Train Station	Sunderland
Road Link	N/A
Airport	Newcastle Airport

Coworking Spaces

- **Price** : Â£190 pcm
- **Min Price** : Â£190 pcm
- **Total Size** : 5 wkstns
- **Min Term** : 1 mnths
- **Max Term** : 1 mnths