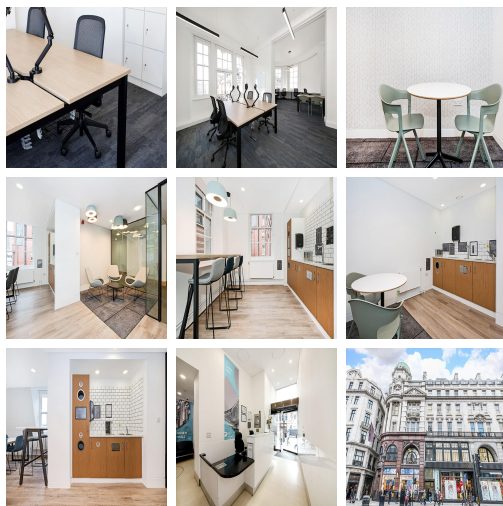
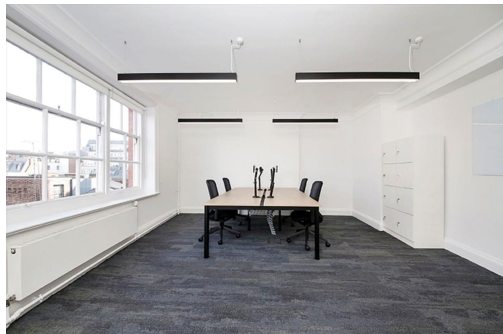


# Serviced Office Space UK

## London W1B 5TE



The workspace is just a short walk along Regent Street from both Oxford Circus and Piccadilly Circus underground stations. There are two-way access to reach this place which is by car or public transport as such as taxi, train and bus. The main train station of Charing Cross Station. The local area has plenty of restaurants, cafes, bars, and shops to enjoy if you want a break from the office. All public transport is available at right outside the centre. There is parking available at the center.

It is a bustling hub and home to hundreds of small businesses. The building offers a range of small offices, available on flexible terms. All offices are offered carpeted and services include a 24-hour reception, free use of meeting rooms, break out areas on each floor and includes high speed internet. The space recently refurbished meeting rooms are equipped with TV screens for connecting laptops for presentations. Clients can also book one of the meeting rooms for theatre style presentations for up to 12 people. The communal tea points offer a place to have a quiet chat, a coffee break and some lunch with soft seating, highchairs, and cafe style tables. Showers and bike racks are available on a first come first served basis daily.

## transport links

**Underground**  
**Train Station**  
**Road Link**  
**Airport**

Oxford Circus Underground Station  
Charing Cross Station  
N/A  
London City Airport

## Serviced Offices

- **Price** : £450 pcm
- **Min Price** : £450 pcm
- **Min Size** : 8 wkstns
- **Max Size** : 12 wkstns
- **Total Size** : 30 wkstns
- **Min Term** : 1 mnths
- **Max Term** : 12 mnths