

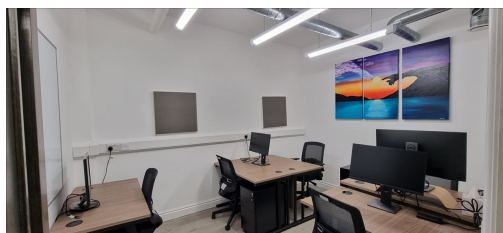
Serviced Office Space UK

9-15 Elthorne Road

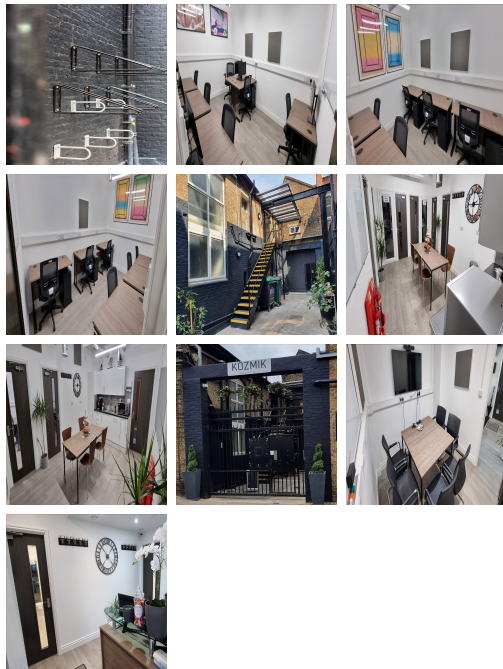
London N19 4AJ



This workspace is ideally suited for teams looking to be productive in a convenient environment. With bus routes, taxis and the Archway metro station all close by and London City Airport within a few miles of the workplace, commuting to and from the location could not be easier. The surrounding area offers a wide range of eateries, and amenities like banks and retail shops, providing tenants with everything at their doorstep. This centre is the ideal setting for those professionals commuting from even the furthest reaches of the wider region.



This workspace solution provides amenities to ensure businesses are productive and efficient. It offers access to high-speed internet, equipped with printing and copying facilities, cleaning services, and beverages, ensuring that all the members of the workspaces remain comfortable and happy. Furthermore, this business centre combines an elegant design with practicality – the perfect choice for any business. From cosy meeting rooms to accommodating workplaces, this innovative solution can fulfil the needs of tenants. This stylish contemporary building has an entrance that makes a statement as the first impression for guests.



transport links

**Underground
Train Station
Road Link
Airport**

Archway
Upper Holloway
Archway corner
London City Airport

Virtual Office

- **Price** : £13 pcm
- **Min Price** : £13 pcm
- **Min Term** : 12 mnths
- **Max Term** : 36 mnths