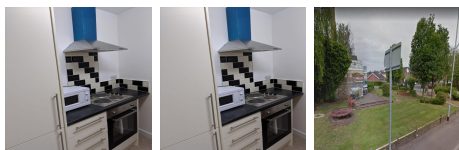


111 Newport lane stoke-on-trent

Stoke-on-Trent ST1 5JG



The property is located on Newport Lane close to the Middleport Health Centre - an office building forming part of Stoke on Trent's new business district. The offices are by Middleport Park, close to a range of local retail and leisure amenities. The building is situated near to the Hanley Bus Station. Road improvements in the area will see a new link road from the A500 'D' joining Festival Business Park and development along Newport Lane. Additionally, the Stoke Railway Station and Staffordshire University are in proximity 5 minutes away from the centre. The building has on-street parking. The centre also has eateries on-site, and other outlets are very close by.

This space offers 5 private offices with access to a kitchen, toilet and a shared meeting room with extensive refurbishment. This well-connected workspace is next to the main transport links for easy access to the train station and beyond—modern, high-quality flexible office space located on Newport lane Stoke-on-Trent, Staffordshire. Besides, 24 hours access in 7 days out of every week with high-speed WIFI is accessible all through the centre. This vibrant centre comes with a fully furnished various offices layout. Kitchen: 10.98 sq m (118 sq ft) Bathroom: 5.15 sq m (55 sq ft) shared meeting room : 10.30 sq m (110 sq ft) Office 1: 8.71 sq m (94 sq ft) £80 pw Office 2: 13.84 sq m (149 sq ft) £80 pw Office 3: 10.38 sq m (111 sq ft) £80pw Office 4: 8.71 sq m (94 sq ft) £80pw Office 5: 8.71 sq m (94 sq ft) £80pw To rent out all the building cost £400 PW including gas, electric and internet.

transport links

Underground	N/A
Train Station	Longport
Road Link	N/A
Airport	Signature Flight Support MAN - Manchester Airport

Serviced Offices

- **Price** : £113 pcm
- **Min Price** : £113 pcm
- **Min Size** : 4 wkstns
- **Max Size** : 4 wkstns
- **Total Size** : 4 wkstns
- **Min Term** : 12 mnths
- **Max Term** : 12 mnths