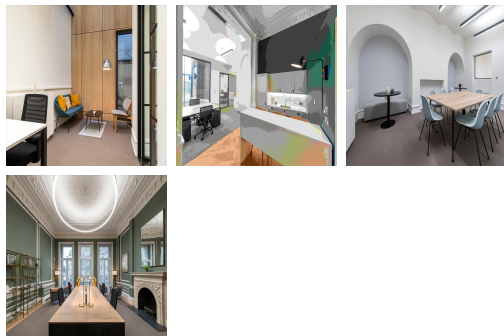


Serviced Office Space UK

London SW1W 0DH



The building is situated in the heart of Belgravia, within the Grosvenor Gardens Conservation Area. The space itself includes a break out space where you can relax and unwind on an evening or during a lunch break. The office is a two-minute walk from Victoria Station and Victoria Underground. Victoria has undergone a substantial transformation in recent years and provides a wealth of world class amenities and transport connections, whilst Elizabeth Street provides a range of boutique shopping and high-end dining and shops.

This business centre located in a prime area of London provides 1,033 sq ft of fully fitted office space set in a stunning period building and ready for immediate occupation. The office space is fully cabled and provides 10 executive desks with a meeting room, a kitchenette, a touchdown bench and breakout space for a change of scenery on lunch time. Here, you can also make use of the in-house on-site management team who are there to assist you with anything you may need. Commuting to and from the office is quick and easy with Victoria Station only a short walk away and communal bike racks and showers available on-site.

transport links

Underground	Victoria Station
Train Station	Victoria Station
Road Link	N/A
Airport	London City Airport

Leased Spaces

- **Price** : £8 pcm
- **Min Price** : £8 pcm
- **Total Size** : 1196 sq ft
- **Min Term** : 36 mnths
- **Max Term** : 120 mnths