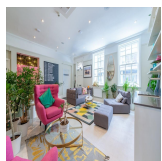
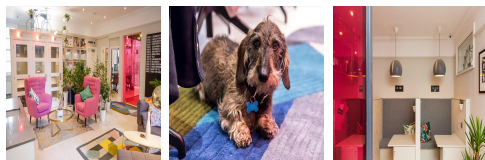


Serviced Office Space UK

68 Quay Street

Manchester M3 3EJ



This building is in a fantastic central Manchester location, close to excellent transport links and amenities. Salford Central railway station is just a five-minute walk, with bus stops on the doorstep. Manchester Victoria Station is a 12-minute walk, offering access to rail and tram services. The property nearby has trendy bars and restaurants waiting to be explored on lunch breaks or after hours. Manchester's Arndale Shopping Centre is just a short walk from the centre. The centre is accessible from almost every transport link, placing tenants and their teams in a well-connected and easily accessible location.

The centre is a non-compete workspace allowing businesses to collaborate and focus on growth. Each workspace is unique and individually designed with different flooring and lighting. This space gives businesses their identity based on a large social area. The workspace allows clients 24-hour access seven days a week with free high-speed WIFI accessible all through the centre. There are lounges and breakout areas where tenants can take a break during a hectic workday. The refined design and stunning landmark architecture are locally renowned as a commercially significant business establishment incorporating a neutral palette, international style, and industrial materials to create an elegant and fun workspace.

transport links

Underground	N/A
Train Station	Salford Central
Road Link	N/A
Airport	TM3 Airports

Serviced Offices

- **Price** : £1400 pcm
- **Min Price** : £1400 pcm
- **Min Size** : 4 wkstns
- **Max Size** : 10 wkstns
- **Total Size** : 23 wkstns
- **Min Term** : 12 mnths
- **Max Term** : 24 mnths