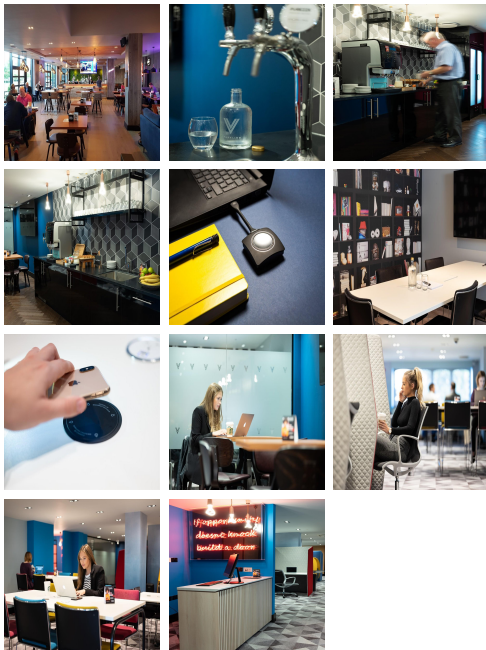


Serviced Office Space UK

Ashton-Under-Lyne OL7 0LY



This Manchester building is located to the east of the city, in the bustling market town of Ashton-under-Lyne. Located off the M60 at junction 23, you're just 20 minutes away from Manchester city centre by car. 250 car parking spaces are available so you won't have to worry about finding a spot in the morning! This location is well-connected to Manchester's train and tram lines too, with Ashton-under-Lyne train station and Ashton West metro station within walking distance from the hotel. Plus, if you want to get away from it all and venture outside of Manchester, this space is close to the Peak District National Park, which is perfect for a day trip.

This fantastic co-working space is in a league of its own. At this location members will have access to a vast range of useful and meaningful amenities. This space has flexible desks, fixed desks, phone booths, private meeting pods, and a break out space. At this space you will have ample networking opportunities as you will be working alongside like-minded business people. The spaces are open plan areas, and a superb place to enjoy the required qualities of a high standard that promotes good work life balance, and connect with the collective members who can enjoy a light business lunch delivered from the on-site Pub & Grill in surroundings good enough to keep them productive. State-of-the-art leisure and fitness facilities are also available at this fantastic location. Strike the perfect work life balance at this cool, vibrant co-working space today!

transport links

Underground	N/A
Train Station	Manchester Piccadilly
Road Link	N/A
Airport	Delta Obstruction Lights

Coworking Spaces

- **Price** : £89 pcm
- **Min Price** : £89 pcm
- **Total Size** : 65 wkstns
- **Min Term** : 6 mnths
- **Max Term** : 12 mnths