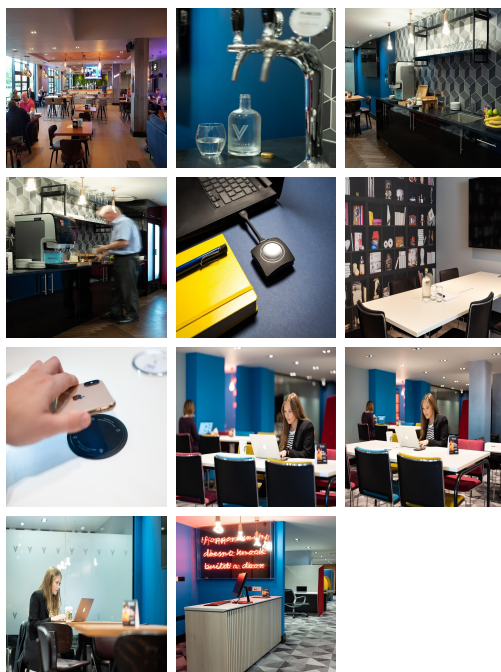


# Serviced Office Space UK

## Portsmouth PO6 3FR



This brand new Portsmouth location opened in late 2017 and is located in the Lakeside North Business Park. This space is located to the north of Portsea Island, with excellent transport links to both the city of Portsmouth and the wider Hampshire area via the M27 and the A3. Cosham train station is just a short walk away with a regular service into the city centre. 300 parking spaces are available at this location so you will not have to worry about finding a place to park in the morning. Donaldson Road bus stop is situated seven-minutes away on foot.

Work in a cool, vibrant environment at this state-of-the-art co-working space. This location has been carefully designed to meet the demands of your modern business and members will have access to a range of useful and meaningful amenities. Flexible desks, phone booths, private meeting bods, and a breakout area are all included here. This is the ideal location to network as you will be working alongside like-minded business people. This space understands the importance of a work life balance. When you become a member you will gain access to a number of perks this space has to offer including state-of-the-art leisure and fitness facilities, an on-site Pub & Grill, free-flowing tea and coffee, and much more! Every detail has been considered so that you can hit the ground running from the day you move in.

### transport links

Underground	N/A
Train Station	Hilsea
Road Link	N/A
Airport	Pretty in Pink Limousines

### Coworking Spaces

- **Price** : Â£55 pcm
- **Min Price** : Â£55 pcm
- **Total Size** : 50 wkstns
- **Min Term** : 6 mnths
- **Max Term** : 12 mnths