

Serviced Office Space UK

10 The Silverlink N

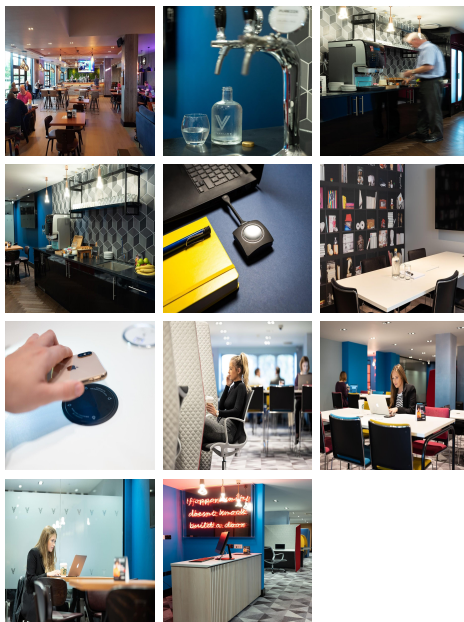
Newcastle NE27 0BY



The Silverlink forms part of North Tyneside and is located in close proximity to Silverlinks central retail centre. This location is well-connected and easily accessible. This space is only a five-minute drive from the A19 and just 10-minutes from the A1 providing road access both north and south. Newcastle City Centre is only 14 minutes (6.7 mi) away via A1058. Ample on-site parking is available for your convenience. The nearest bus stop is located just one-minute away from the office. Newcastle International Airport is only 22 minutes (14.7 mi) away via A19 and A1.



The secret of getting ahead is getting started with a cool vibrant environment, this is a place that keeps members and customers out of the city, away from all the hustle and bustle, and a place to have a healthy body and a healthy mind. This space has flexible desks, fixed desks, phone booths, private meeting pods, and a break out area to meet and be social with like-minded business people. This location has open plan areas, and a superb place to enjoy the required qualities of a high standard that promotes good work life balance, and connect with the collective members who can enjoy a light business lunch delivered from a Pub & Grill in surroundings good enough to keep them productive. With great background music and refreshments on tap this location provides an atmosphere cool enough to make a really big impression to produce a strong effect on guests with a pleasant, soothing ambience. This space offers several membership types to suit your way of working and all-inclusive pricing, so you can move in with peace of mind that there will be no unexpected charges each month.



transport links

Underground	N/A
Train Station	Manors
Road Link	N/A
Airport	Destinations by George!

Coworking Spaces

- **Price** : £89 pcm
- **Min Price** : £89 pcm
- **Total Size** : 95 wkstns
- **Min Term** : 6 mnths
- **Max Term** : 12 mnths