

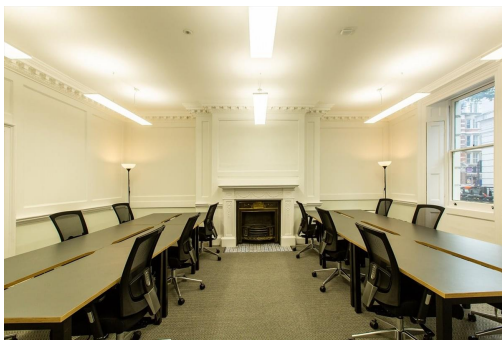
Serviced Office Space UK

3 Bloomsbury Place

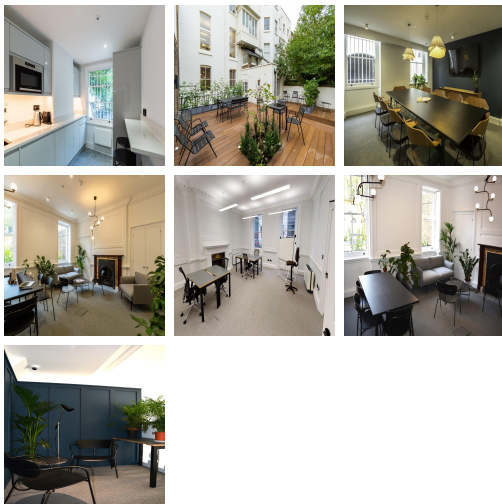
London WC1A 2QL



This centre is in the heart of London, an attractive area filled with garden squares and cultural hot spots. This area is also home to shops, restaurants, bars, and hotels. Fantastic transport links are available from this location. Hop on the tube at Holborn Station short five-minute walk away from the office. The nearest bus stop is located just two minutes away on Southampton Row. Taxis are readily available. This centre is conveniently located and boasts excellent transport links as well. Commuting to work is also easy.



This stunning building offers many original period features and benefits from large windows. The centre has ten unique and private office suites varying in size are available. This impressive workspace is the ideal location to thrive. In addition, this space is fully furnished and provides its members with access to meeting rooms and a communal kitchen. This ultra-modern business centre has amenities that are affordable and meaningful. Spacious, fully-furnished offices offer a team somewhere to work comfortably, where members can move in and get started - no need for time wasted setting up various desks.



transport links

Underground	Holborn
Train Station	Tottenham Court Road
Road Link	N/A
Airport	London City Airport

Serviced Offices

- **Price** : Â£460 pcm
- **Min Price** : Â£460 pcm
- **Min Size** : 2 wkstns
- **Max Size** : 30 wkstns
- **Total Size** : 100 wkstns
- **Min Term** : 3 mnths
- **Max Term** : 12 mnths