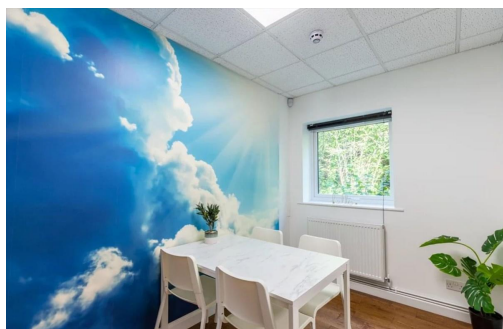


# Serviced Office Space UK

## Chequers Close

### Malvern WR14 1GP



Enigma Park is a fantastic location for business in the county. As well as being surrounded by a wide array of businesses, Open Space is right next to the retail park, Morrison's and the Malvern Spa. Set under the beautiful Malvern hills the business center is also well placed for recreational activities. Furthermore, the location is easily accessible from not just Malvern but also Worcester, Hereford and the M5 for those that commute and sometimes work on the road.

Open Space Enigma park provides Grade A serviced office space in a prime location. Newly upgraded and modernised the offices are brand new and are the perfect fit for all types of business. Open Space Serviced Offices include everything the modern business needs. Tenants receive just 1 monthly bill which includes everything needed to run your office. With Leased line internet, parking and furniture included new tenants can be up and running immediately. All offices have 24/7 access so you can work when and how you want. Let Open Space take the hassle out of running your office. We deal with utilities, maintenance and day to day running so you don't have to.

## transport links

Underground	N/A
Train Station	Malvern Link
Road Link	N/A
Airport	Gloucestershire Airport

## Serviced Offices

- **Price** : £165 pcm
- **Min Price** : £165 pcm
- **Min Size** : 1 wkstns
- **Max Size** : 12 wkstns
- **Min Term** : 3 mnths
- **Max Term** : 12 mnths