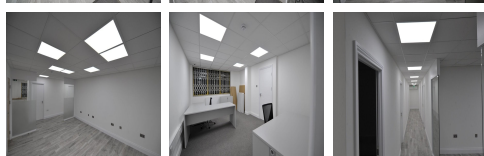
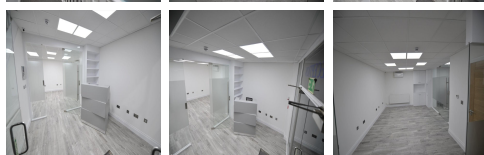
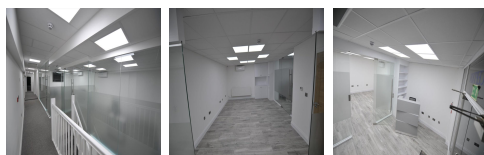
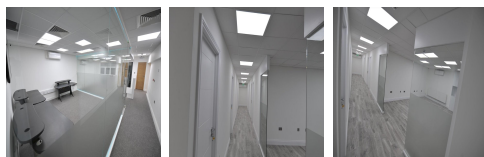
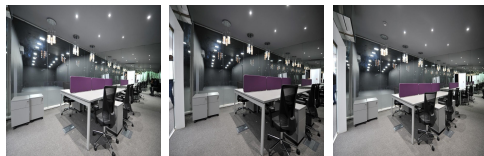
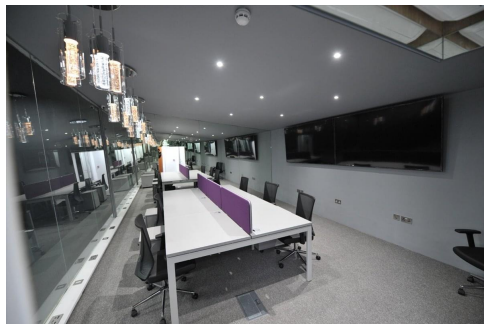


Serviced Office Space UK

18-20 Commercial Way

London NW10 7XF



Located outside of London's Congestion Zone, and with direct access via the A40 to the M25 and M40 motorways, Oxford and Birmingham are only a 1 and 2-hours drive respectively, with Heathrow Airport being less than 30 minutes away. For London connections, Hanger Lane and Park Royal tube stations are just a few minutes walk from these offices. And with Crossrail coming in 2018 at East Broadway station, you can be on Bond Street in just 12 minutes. First Central 200 also offers a range of amenities on or adjacent to the site including a range of hotels and restaurants including the new Hampton Hotel, which is opening soon.

Base your business in the hyper-connected Park Royal, and join a vibrant community of like-minded professionals. You can't help but be inspired in these contemporary, design-led offices with natural light in abundance and a friendly team of staff. This ultra-modern office space has been carefully designed to boost productivity. Plug in and stay productive thanks to high-speed Wi-Fi and a range of flexible spaces to suit your needs, from private rooms to communal areas. Members can also take advantage of 24/7 building access so you will not be confined to traditional business hours. Every detail has been considered so that you can hit the ground running from the day you move in.

transport links

Underground	Victoria Station
Train Station	Victoria Station
Road Link	N/A
Airport	Heathrow Airport

Serviced Offices

- **Price** : £260 pcm
- **Min Price** : £260 pcm
- **Min Size** : 2 wkstns
- **Max Size** : 8 wkstns
- **Total Size** : 50 wkstns
- **Min Term** : 6 mnths
- **Max Term** : 36 mnths