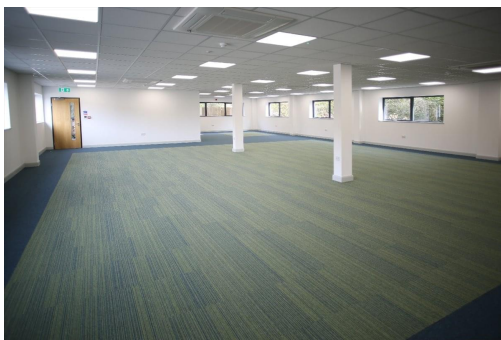


# Serviced Office Space UK

---

## 11 Charter Point Way

Ashby-de-la-Zouch LE65 1NF



Located on a modern business park, on the edge of the lovely market town Ashby de la Zouch in the heart of the national forest, this brand new building is located at a fantastic location. This space is located nearby the M42, and with on-site parking available, thereby allowing the members to commute to and from work with ease. Buses pass through the area frequently. The nearest bus stop, Birch Road, is located a short ten-minute walk away. Aldi, Tesco Extra, Greggs, McDonald's, and KFC are located a short walk away. An ATM is also located nearby.

This is a brand new office building which is available in a great location on the edge of Ashby de la Zouch! A fantastic space comprises of airy, bright office space, available as a whole, part, or multi-desk. This modern space has been designed to boost productivity, and the space is unfurnished so that the members can customise the space to reflect their business. High-speed fibre broadband and raised floors make this location ideal for multiple occupancies and multiple companies to grow their business. This business centre is available for immediate occupancy and flexible letting terms from twelve to sixty months.

### transport links

Underground	N/A
Train Station	Willington
Road Link	N/A
Airport	East Midlands Airport

### Leased Spaces

---

- **Price** : £2 pcm
- **Min Price** : £2 pcm
- **Min Size** : 10 sq ft
- **Max Size** : 10 sq ft
- **Total Size** : 987 sq ft
- **Min Term** : 12 mnths
- **Max Term** : 60 mnths