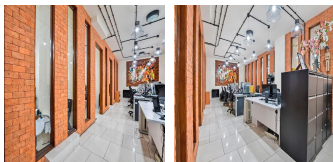
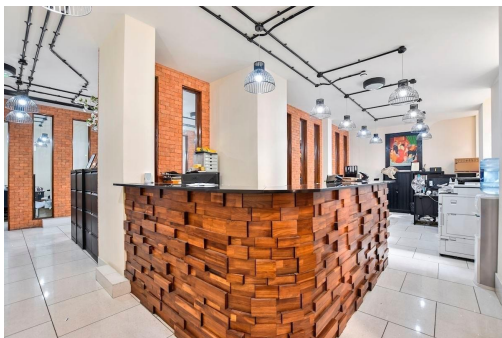


Serviced Office Space UK

25 Northumberland Avenue

London WC2N 5BJ



Located in the heart of London on Northumberland Avenue a short three-minute walk away from Charing Cross Station. This well-connected and easily accessible workspace will make your commute to and from work an easy one with tube, train, and bus services all available in the immediate vicinity. The nearest bus stop, Trafalgar Square (Stop W), is located on the doorstep of the office. Members will look out onto Trafalgar Square from this location and will be surrounded by a sea of restaurants, bars, retail options, and other useful amenities.

A quirky office space located at a prestigious address available now! This space boasts a vibrant interior that has been carefully designed to boost creativity and productivity. This space is filled with stylish yet comfortable furniture and an abundance of natural light that creates a comfortable working environment. In addition, members have access to everything they need for their modern business to thrive. Business essentials such as front desk service, administrative support, and high-speed internet are included as standard. This fully serviced space has considered every detail so that you can hit the ground running from the day you move in.

transport links

Underground	Charing Cross
Train Station	Charing Cross Station
Road Link	N/A
Airport	London City Airport

Leased Spaces
