

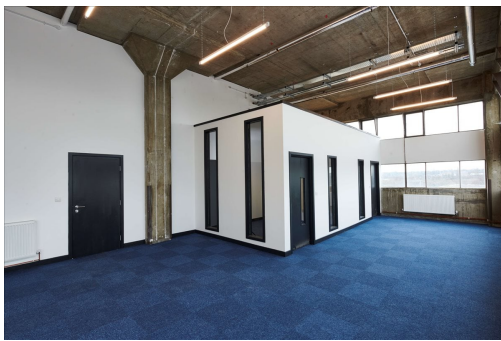
Serviced Office Space UK

Fountayne Road

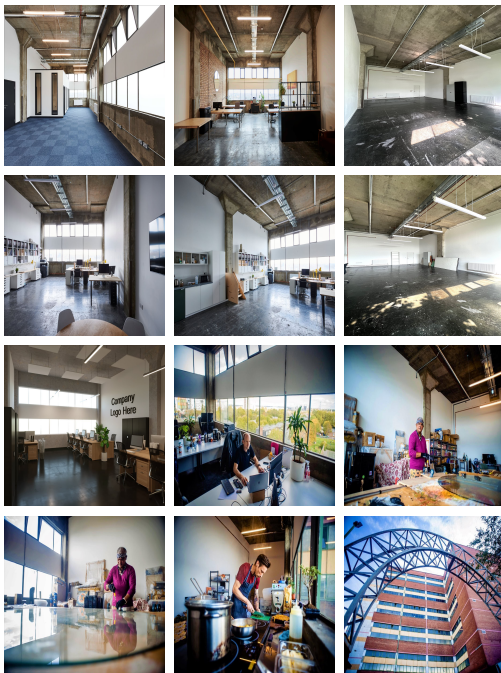
London N15 4BE



Transport links are excellent from this location, with Tottenham Hale (Victoria Line) a five-minute walk from the office with connections into Kings Cross and Oxford Street - every fifteen minutes. For those arriving by car, ample on-site parking is also available. Also, this space supports green transport, and bike storage is available on-site. This location places people just a stone's throw away from the heart of London and has thriving businesses and a range of shops, restaurants, cafes, and other amenities.



The upper floor contains a variety of size studios for every type of company. Also, the ground floor is a thriving hub of activity filled with food vendors and a café and bar providing ample refreshments. This meeting space is perfect for catching up with clients or colleagues in a relaxed setting. Members also have access to multi-purpose event space. Also, this modern workspace is filled with natural light and boasts views over the railway and wetlands. Spacious, fully-furnished offices offer a team somewhere to work comfortably, where members can move in and get started - no need for time wasted setting up various desks.



transport links

Underground	Tottenham Hale
Train Station	St Pancras International
Road Link	N/A
Airport	London City Airport

Serviced Offices

- **Price** : Â£170 pcm
- **Min Price** : Â£170 pcm
- **Min Size** : 4 wkstns
- **Max Size** : 14 wkstns
- **Total Size** : 14 wkstns
- **Min Term** : 6 mnths
- **Max Term** : 16 mnths

