

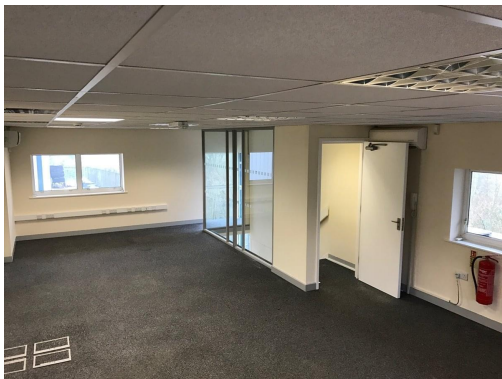
Serviced Office Space UK

Cherry Orchard Lane

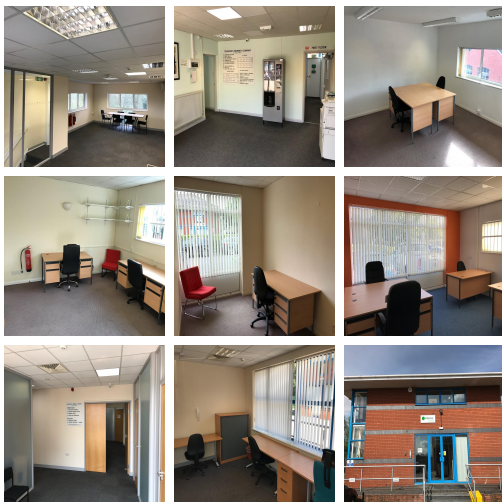
Salisbury SP2 7LD



Situated just 10 minutes from the stunning medieval cathedral city of Salisbury and approximately 400 meters from the mainline railway station, this business centre is located within the Boathouse Meadow Business Park which is at the western edge of the busy Churchfields commercial and industrial estate. Salisbury has a number of places to eat and drink, whether it is a morning coffee or a meal after work you require. Starbucks Coffee, Wagamama and the Giggling Squid are just some of the options available.



These purpose-built serviced office facilities are situated next to the picturesque River Nadder within easy walking distance from the train station and Salisbury city centre. With free parking, our offices are well managed, spacious and sensibly priced. They range in size from a 100 sq ft one/two person space to a 310 sq ft five person office, with plenty in between. Our term lengths are flexible and with a minimum commitment of 3 months they lend themselves well to start-ups or those seeking temporary space. For more established clients looking for stability, longer terms can be negotiated with ease. Offices can be fully furnished or unfurnished according to the client's requirements. An in-house direct fibre Broadband solution can be provided at a competitive rate or the client is welcome to have their own installed; again, the decision and indeed freedom belongs to the client.



transport links

Underground	N/A
Train Station	Salisbury
Road Link	M27 Jnct 2
Airport	Old Sarum Airfield

Virtual Office

- **Price** : Â£30 pcm
- **Min Price** : Â£30 pcm
- **Min Term** : 3 mnths