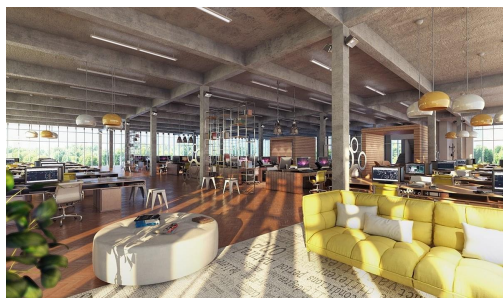


Serviced Office Space UK

Congleton Road

Macclesfield SK10 4TF



The centre is located in Macclesfield. The space offers a relaxing and rural setting, with an abundance of space for tenants to enjoy a lunchtime stroll or workout. Tenants can make use of the centre's regular shuttle bus services from both Macclesfield and Rail Stations, allowing clients to leave their car at home. For those who drive, the M6 is only a twenty-minute drive, and Manchester, Leeds and Liverpool city centres can all be reached within the hour. The centre also has an abundance of car parking spaces.

Situated within a stunning 400-acre estate, this centre is based within a world-class science park that boasts state-of-the-art technology and an abundance of amenities. Ideal for those within the science and technology industries, the centre allows clients to infuse the space with their brand and tailor it to their desired specifications, with floorplates able to be amalgamated to suit their needs. Tenants can make use of the centre's variety of onsite cafes and restaurants, fitness centres, sports pitches, and running trails. Clients will become a part of a vibrant, thriving like-minded community and benefit from the space's facilities, including its impressive conference centre -home to an auditorium, meeting rooms, and exhibition space.

transport links

Underground	N/A
Train Station	Alderley Edge
Road Link	N/A
Airport	Manchester Airport

Serviced Offices

- **Price** : £350 pcm
- **Min Price** : £350 pcm
- **Min Size** : 2 wkstns
- **Max Size** : 10 wkstns
- **Min Term** : 1 mnths
- **Max Term** : 12 mnths