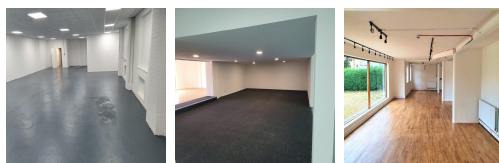
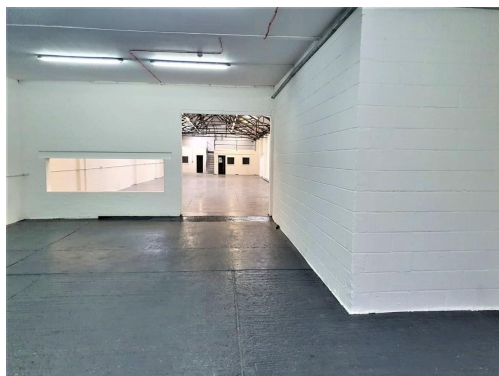


Serviced Office Space UK

Chichester PO19 8ZZ



Located on the famous Terminus Road in Chichester; a local hub for many manufacturers, traders and retailers. Terminus Road is the main commercial route through this established industrial site south west of Chichester City Centre.

Strategically positioned with quick access onto the A27, a short five-minute drive from Chichester train station with quick access to the city centre. Ample on-site parking is also available for your convenience. Buses pass through the area frequently. South Bank bus stop is located a short two-minute walk away.

This newly refurbished business park premises in Chichester offers a range of self-contained warehousing, industrial, retail, storage and office space units ideal for companies looking for manufacturing, transportation, storage, trading and business-park style retail opportunities with great local and national transport links. The units range in size from 2,000 to 14,000+ sq ft and are available to let on long term or flexible agreements. Members have access to useful amenities including a dedicated kitchen area, break-out space, loading bays and vehicle access, and showering facilities. Business essentials are also included such as 24/7 access, CCTV, and high-speed internet. IT / Tel packages can also be included.

transport links

Underground	N/A
Train Station	Chichester Station
Road Link	N/A
Airport	Goodwood Aerodrome

Leased Spaces

- **Price** : £1 pcm
- **Min Price** : £1 pcm
- **Min Size** : 3 sq ft
- **Max Size** : 15 sq ft
- **Total Size** : 3652 sq ft
- **Min Term** : 12 mnths
- **Max Term** : 60 mnths