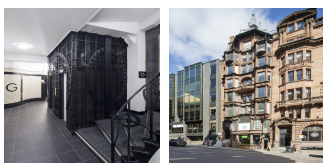
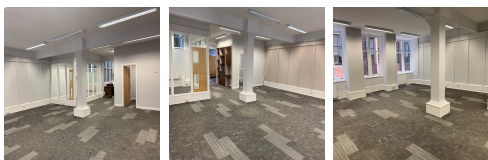


# Serviced Office Space UK

## Glasgow G2 5LQ



Located in the heart of Glasgow city centre, tenants will have an enviable location with easy access to the city's main transport hubs as well as the best eateries, cafes and retail options. The space is based on St Vincent Street, which itself has a wide range of lunchtime options and venues for post-work drinks. In terms of transport, Glasgow Central station is just a two-minute walk and boasts services from LNER, CrossCountry, Transpennine Express and Virgin Trains. Tenants can take advantage of direct services to the UK's main business destinations. Alternatively, Glasgow Queen Street is just a six-minute walk and offers further rail services. For users of the Glasgow subway, Buchanan Street station is within a five-minute walk.

Situated in the heart of Glasgow within a stunning Grade A-listed Art Nouveau listed building, this centre offers flexible workspace with a robust menu of amenities. The space offers a sophisticated blend of the traditional – retaining some original features – and modern, with recessed lighting and a light & airy interior design. The space is composed of just over 1,000 square feet, making in an exciting proposition for larger businesses looking for a new home. Businesses will be able to infuse their brand on the space and make it their own. Amenities include raised access floors, gas central heating, two 8-person passenger lifts, toilet facilities on each floor and kitchenette facilities.

### transport links

<b>Underground</b>	Buchanan Street SPT Subway Station
<b>Train Station</b>	Glasgow Central Station
<b>Road Link</b>	N/A
<b>Airport</b>	Supreme Private Hire

### Leased Spaces

- **Price** : £1 pcm
- **Min Price** : £1 pcm
- **Min Size** : 1 sq ft
- **Max Size** : 10 sq ft
- **Total Size** : 1149 sq ft
- **Min Term** : 12 mnths