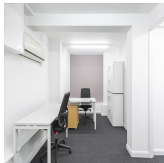
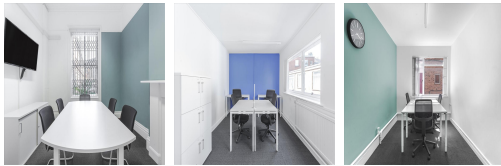


Serviced Office Space UK

Coventry CV1 2DY



Located within Coventry's city centre, this centre enjoys excellent bus, train and airport connections. Only a five-minute walk from Coventry Train Station, you can easily catch connections to London Euston and Birmingham New Street as well as many other destinations, including Birmingham Airport. Shopping centres with well-known brands are located in Coventry, as are a host of places to eat. The city's cathedral is an attraction worth visiting and Coventry is home to sporting venues including the Ricoh Arena.

This business centre is a self-contained, well maintained Grade II Listed building within the sought-after professional sector of central Coventry. Providing fully serviced and furnished office suites and meeting facilities on totally flexible licence agreements. Tenants can make use of three meeting rooms, a serviced reception area, cybercafé, IT support, secretarial assistance and catering. With round-the-clock access, businesses can have flexible working hours here without any issues, and the security system provides that extra peace of mind. The space is suitable for a wide range of business types.

transport links

Underground	SUBWAY Coventry
Train Station	Coventry
Road Link	M6 jnct 3
Airport	Coventry Airport

Virtual Office

- **Price** : £115 pcm
- **Min Price** : £115 pcm
- **Min Term** : 24 mnths
- **Max Term** : 999 mnths