

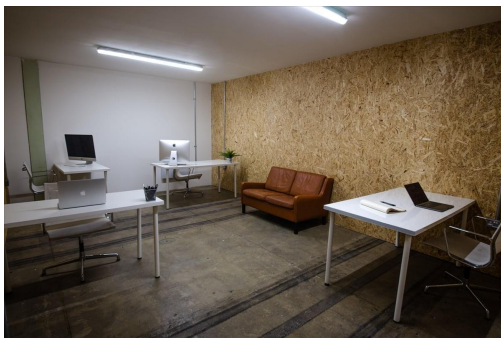
Serviced Office Space UK

Astor Road

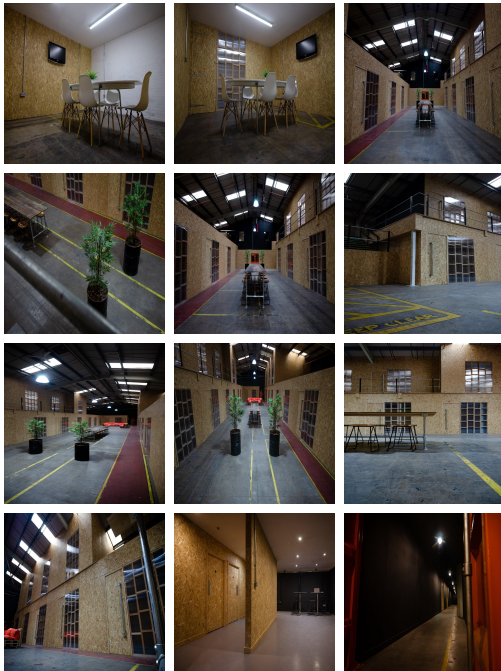
Salford M50 1BB



This workspace is in Salford and has links to the City Centre and Media Centre. For those who drive, the centre has good, easily accessible motorway links, with the M602 (leading to the M60) just a stone's throw from the office. Alternatively, public transport links are also good, with two Metrolink stops - Ladywell and Weaste are around a nine-minute walk from the office. Tenants will have a good range of local amenities close by to take advantage of lunchtime, including the Trafford Centre is just an eleven-minute drive.



The refined design and stunning landmark architecture are locally renowned as a commercially significant business establishment incorporating a neutral palette, international style, and industrial materials to create an elegant and fun workspace. Spacious, fully-furnished offices offer a team somewhere to work comfortably, where members can move in and get started straight away - no need for time wasted setting up various desks. This amenity-rich complex is the perfect location for any business seeking a modern workspace to thrive. This stylish contemporary building has an entrance that makes a statement as the first impression for guests.



transport links

Underground	N/A
Train Station	Manchester United Football Ground Station
Road Link	M60
Airport	Manchester Airport

Serviced Offices

- **Price** : Â£220 pcm
- **Min Price** : Â£220 pcm
- **Min Size** : 4 wkstns
- **Max Size** : 21 wkstns
- **Min Term** : 6 mnths
- **Max Term** : 12 mnths

