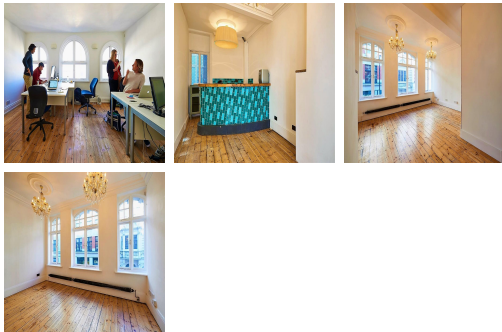


# Serviced Office Space UK

## 177 Wardour Street

London W1F 8WX



This workspace is in the heart of London. The work centre is within walking distance of excellent public transport connections. The office space is between Tottenham Court Road Station and Oxford Circus Station. Piccadilly Circus Station is located within a seven-minute walk, making the journey to work very easy for commuters. The beautiful period building is in an excellent Soho location, with eateries, restaurants, shops and bars a stone's throw away. The centre is accessible from almost every transport link, placing tenants and their teams in a well-connected and easily accessible location.

The work centre has a rooftop terrace and super fast leased line internet throughout the building. This location has four private offices, three are 300 square feet, and one is 230 square feet. The offices are available with one month's notice before moving in. Tenants can benefit from fantastic high ceilings, stunning wooden floors and beautiful windows. Spacious, fully-furnished offices offer a team somewhere to work comfortably, where members can move in and get started straight away - no need for time wasted setting up various desks. This amenity-rich complex is the perfect location for any business seeking a modern workspace to thrive.

### transport links

<b>Underground</b>	Tottenham Court Road
<b>Train Station</b>	Charing Cross Station
<b>Road Link</b>	N/A
<b>Airport</b>	London City Airport

### Serviced Offices

- **Price** : Â£600 pcm
- **Min Price** : Â£600 pcm
- **Total Size** : 19 wkstns
- **Min Term** : 1 mnths
- **Max Term** : 12 mnths