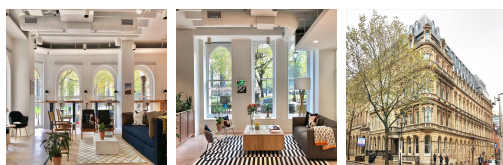


# Serviced Office Space UK

---

## 55 Colmore Row

### Birmingham B3 2AA



This workspace is situated in the heart of Birmingham, placing tenants and their teams in a well-connected and easily accessible location. The work centre has excellent access to many public transport. Birmingham Snow Hill, New Street, and Moor Street Stations are all within walking distance of the office space. Due to the fantastic location, there are several restaurants, cafes, shops and bars on the doorstep of the work centre. This centre is the ideal setting for those professionals commuting from even the furthest reaches of the wider region.

This listing offers modern, spacious and high-quality office accommodation. The work centre offers open-plan co-working areas and stylish private offices. The business centre encourages like-minded individuals to collaborate and share ideas to help grow each other's business. The office space is available on a month-to-month flexible basis, allowing companies to grow. The office building has amazing facilities such as conference facilities, unique common areas, administrative support, beverages, high-speed internet connection, a kitchen and many more things. This centre is accessible 24 hours daily, enabling occupants to work flexibly.

### transport links

<b>Underground</b>	N/A
<b>Train Station</b>	Birmingham New Street station
<b>Road Link</b>	N/A
<b>Airport</b>	Birmingham Airport

### Coworking Spaces

---

- **Price** : Â£250 pcm
- **Min Price** : Â£250 pcm
- **Total Size** : 1 wkstns
- **Min Term** : 1 mnths
- **Max Term** : 12 mnths