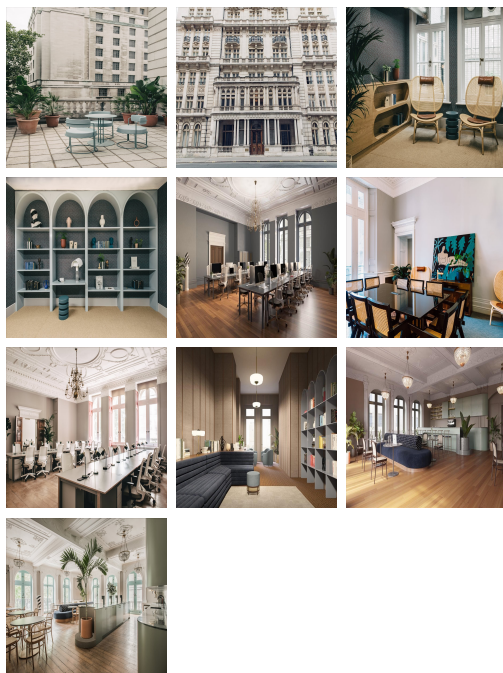


# Serviced Office Space UK

## 1 Horse Guards Avenue

London SW1A 2EP



This listing is perfectly situated on Horse Guards Avenue in Central London. The work centre has excellent access to fantastic public transport connections. Embankment Underground Station and Charring Cross Station are both located a couple minutes walk from the office space. The work centre is also a stone's throw from multiple bus stops, making the office space very accessible for commuters. Due to the fantastic location, many restaurants, bars and shops are on the doorstep of the office building- providing plenty of options to grab a quick lunch.

This listing offers outstanding office space, situated in a prime area of Central London. The office building has a wealth of fantastic amenities, this includes; 24 hour access, spacious event spaces and access to high quality meeting rooms. Tenants can also benefit from weekly breakfasts, cultural events and a network of other centres nationwide. By joining this network, you will be apart of a supportive community of like-minded individuals. The work centre has a variety of office space available, ranging from open-plan shared workspace to stylish private offices, this listing has something to suit all sizes of business.

### transport links

<b>Underground</b>	Embankment Station
<b>Train Station</b>	Waterloo Station
<b>Road Link</b>	N/A
<b>Airport</b>	London City Airport

### Coworking Spaces

- **Price** : Â£300 pcm
- **Min Price** : Â£300 pcm
- **Total Size** : 194 wkstns
- **Min Term** : 1 mnths
- **Max Term** : 60 mnths