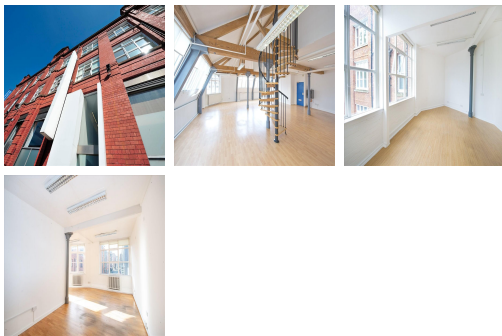


Serviced Office Space UK

Manchester M2 6DN



This office space is perfectly located in the centre of Manchester. There are many great transport connections located in close proximity to the work space. Manchester Piccadilly Station is only a seven minute walk away and there are great bus and tram routes. The office building is just off the Ring Road and tenants can benefit from car parking. Being on the outskirts of the popular Northern Quarter, there are a wealth of cafes, restaurants and bars within walking distance. There is an ALDI located a two minute walk from the office space.

This listing offers modern, light and airy office and studio spaces, ranging in size from 82 sq ft to 3,900 sq ft. Located in the city centre of Manchester, this office building is very well connected and has great amenities on the doorstep. The stunning building has retained lots of its amazing original features, this includes exposed red brick and beautiful wooden beams. The office space also benefits from an impressive reception area and spiral staircases. Tenants can benefit from 24 hour access, CCTV surveillance and car parking. Prices for these beautiful office units start from £290 per month. EPC Rating C.

transport links

Underground	St Peter's Square
Train Station	Manchester Oxford Road
Road Link	N/A
Airport	Royal Travel

Leased Spaces

- **Price** : Â£2 pcm
- **Min Price** : Â£2 pcm
- **Min Size** : 182 sq ft
- **Max Size** : 182 sq ft
- **Total Size** : 6350 sq ft
- **Min Term** : 6 mnths
- **Max Term** : 120 mnths