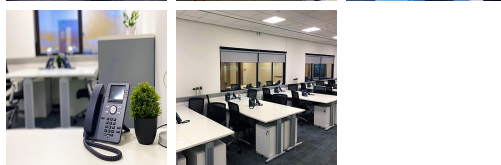
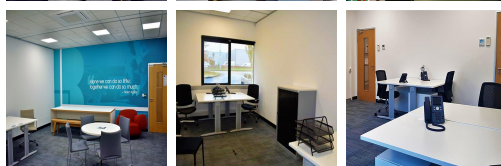
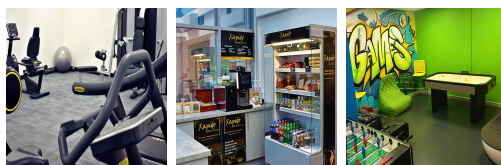


Serviced Office Space UK

234 Victoria Road

Stoke-on-Trent ST4 2LW



This fantastic listing is located on the A50 Victoria Road a main arterial route approximately 1 mile south of Hanley Town Centre the main Central Business District for Stoke-on-Trent. The A50 links to the A500 which provides access to the Motorway network via junctions 15 and 16 of the M6. The office space is within easy reach of excellent public transport services - within a 5-minute journey of Stoke-on-Trent train station and Staffordshire University. The business centre is within easy walking distance of many great local amenities. Subway, McDonald's, ALDI and Asda are all a stone's throw away, perfect for grabbing a quick lunch. Other nearby amenities include fitness centres, bingo centres and a pharmacy.

This well-established luxury business centre offers many inclusive facilities and services to clients. Facilities include fully furnished offices with high-speed internet, parking space, meeting space, professional-grade daily cleaning, reception services, IT support and telecom services, administrative support, beverages, and much more. The business centre is accessible 24 hours a day so the occupants can work flexibly. There are lounges and breakout areas where tenants can take a break during a hectic workday. This centre is a great space that has been designed to meet the demands of any modern business.

transport links

| | |
|---------------|--------------------|
| Underground | N/A |
| Train Station | Stoke-on-Trent |
| Road Link | N/A |
| Airport | Manchester Airport |

Virtual Office

- **Price** : £45 pcm
- **Min Price** : £45 pcm
- **Min Term** : 1 mnths
- **Max Term** : 12 mnths