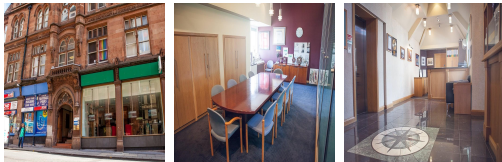


# Serviced Office Space UK

---

## Liverpool L1 6AA



This Grade II listed building is situated in a prominent position on Stanley Street, in Liverpool's commercial district. The office building has excellent access to public transport connections, Moorfields Station is Opposite to the work centre and Liverpool Lime Street is located a nine minute walk away. The work centre is located just off Dale Street, which provides direct access to both the water front and the city centre. There are a huge selection of restaurants, shops, cafes and bars located in close proximity to the office space.

This building offers a variety of office space available to suit the needs of your business. There are three office suites available, one on the ground floor at 1,073 sq ft, the next one is on the first floor and is 3,696 sq ft, the third one is on the fourth floor and is 2,614 sq ft. The office space is located in a Grade II listed building and has many of the original features. Tenants can benefit from air conditioning units, CCTV surveillance, lift access and an intercom system. The office space has beautiful ceramic flooring and integrated ceiling lights. The building can be accessed on Stanley Street via an attractive entrance.

### transport links

<b>Underground</b>	N/A
<b>Train Station</b>	James Street
<b>Road Link</b>	N/A
<b>Airport</b>	Liverpool John Lennon Airport

### Leased Spaces

---

- **Price** : Â£1 pcm
- **Min Price** : Â£1 pcm
- **Total Size** : 7383 sq ft