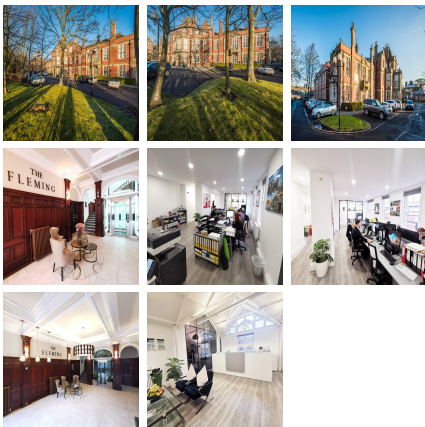


Serviced Office Space UK

Burdon Terrace

Newcastle NE2 3AE



The Fleming Business Centre is located in Jesmond, approximately one mile from Newcastle city centre, in an established residential area that also contains a new care home and an independent girls' school. The Fleming is situated on a 2.2-acre site and is a spectacular Grade II listed former hospital, comprising four principal buildings, together with two lodges, totalling 30,790 sq. ft of internal space. The site includes parking for over 100 vehicles which are allocated to tenants as required. CURRENT AVAILABILITY: Willow Room 38.05 sq. m (410 sq. ft) Wooler Wing 86.99 sq. m (936 sq. ft) Alwin Room 32.83 sq. m (353 sq. ft) All of the available spaces within The Fleming offer bright, contemporary interiors, light walls, large windows and generous natural light. Some of the spaces are under development and on completion in early Summer 2020 will present beautiful exposed brick walls and exposed rafters. The office space is located within walking distance of both Jesmond and West Jesmond Metro Stations, providing connections all around Newcastle. Newcastle Central Train Station is within easy reach, with direct services nationwide. The work centre is located minutes' walk from an array of independent cafes, shops and bars on Acorn Road, Brentwood Avenue and Osborne Road. Interested parties have the opportunity to have their own input into the design of the available units at The Fleming in order to ensure they suit the needs of their business. Current opportunities vary in size, specification and rent so it is best to contact us to discuss the latest available spaces or arrange to view them for yourselves. Video tour of the property available upon request.

This listing features fantastic office space situated in a stunning Grade II listed building. The recently renovated suites are located in Jesmond, only one mile away from Newcastle City Centre. The office suites have an impressive reception area and beautiful original features throughout. The available suites range in size from 353 sq. ft to 1,699 sq. ft, suitable for a variety of business types. The office space is situated on a 2.2 acre site and there are four principal buildings, totalling 30,790 sq. ft of internal space. Tenants can benefit from on-site allocated secure car parking spaces. The available suites are situated in a bright, contemporary loft space, with kitchen facilities and views over the picturesque courtyard.

transport links

Underground	Jesmond
Train Station	Manors
Road Link	N/A
Airport	Newcastle Airport

Leased Spaces