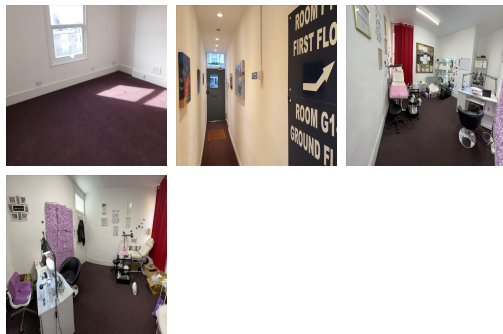


Serviced Office Space UK

Ilford IG1 2LD



The office building is located in a prominent position on Ilford Lane. This centre boasts excellent transport links. Tenants and their teams are placed in a well-connected and easily accessible location. Ilford Station can be reached by foot in under eight minutes, providing direct access to Central London. Due to the fantastic location, tenants can benefit from a variety of local amenities which can be reached by foot. Many restaurants, cafes, shopping centres, and other local amenities are close to this centre.

This centre is a great space that has been designed to meet the demands of any modern business. This centre offers excellent office space located near Central London. The newly refurbished office units are modern and spacious. There are eight office rooms available for rent, spread across the ground and first floor of the building. The building has excellent facilities, including 24-hour access, fast internet, large windows and CCTV surveillance. The office space also has shared kitchen and toilet facilities. This building is a wonderland for all things digital – providing an ever-expanding hub of creatives with never-ending networking opportunities.

transport links

Underground	N/A
Train Station	Northumberland Park Depot (LRT)
Road Link	N/A
Airport	London City Airport

Virtual Office

- **Price** : Â£10 pcm
- **Min Price** : Â£10 pcm
- **Min Term** : 12 mnths
- **Max Term** : 120 mnths