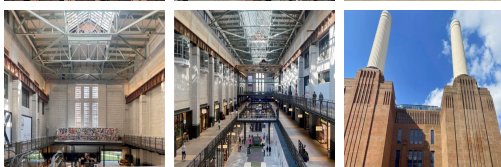
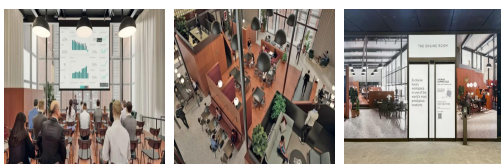
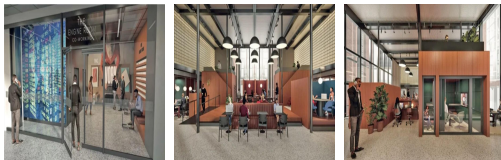


Serviced Office Space UK

The Engine Room

London SW11 8BZ



This extraordinary new workspace has excellent transport links. It is situated half a mile from Battersea Park train station and only four minute's walk from Sleaford Street bus station. From 2020, the new zone one Northern Line London underground station will open, this will provide direct access to the capital's financial district and also the West End. Aside from the fantastic transport links, there are many great cultural things to do nearby, the Natural History Museum is a 20-minute cycle away, or just up the road is the Garden Museum.

The workspace provides fully furnished and equipped offices and meeting rooms. This workspace also includes a business lounge area, two large meeting rooms, secure underground parking, high-speed internet access, a café, and vending machines. The clients will also benefit from 24-hour access and security, so the clients can work through late hours with peace of mind, ideal for companies with international contacts. The workspace offers panoramic views over the area which will keep the clients motivated throughout the day. This represents excellent value for the quality of space provided and would be ideal for professional clients of all sizes and industries.

transport links

Underground	Battersea Power Station
Train Station	Victoria Station
Road Link	N/A
Airport	London City Airport

Virtual Office

- **Price** : Â£149 pcm
- **Min Price** : Â£149 pcm
- **Min Term** : 24 mnths
- **Max Term** : 36 mnths