

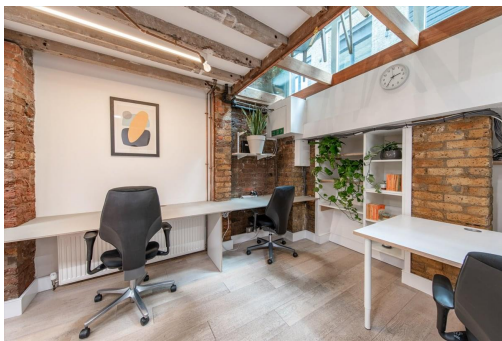
Serviced Office Space UK

8 Albemarle Way

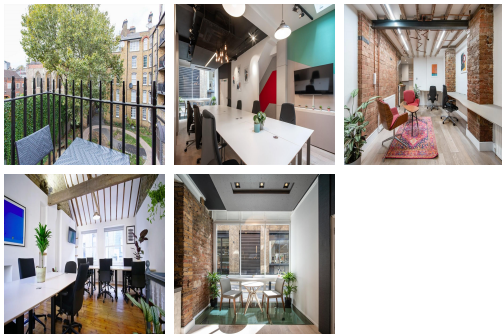
London EC1V 4JB



This office space is in a prime area of London. It is close to fantastic public transport links. Farringdon Station is only a seven-minute walk, and Barbican Underground Station is just a nine-minute walk from this business centre. There are various bus links located within walking distance. The office space is in an area which oozes with design and creativity. There are many great places to grab a coffee or go for an after-work drink. The workspace is next to St John's Square, providing a perfect lunch spot.



This bright and modern workspace is in a charming building in Clerkenwell. The building has many beautiful period features, such as exposed brick walls, timber-beamed ceilings, and stunning floor-to-ceiling windows, which allow an abundance of natural light into the workspace. The workspace has recently been fully renovated and now focuses on catering to creativity, concentration and comfort. The building has access to a private balcony, a communal functioning kitchen and shower facilities. This business centre is the leading workspace provider with multiple office solutions for every business.



transport links

Underground	Farringdon
Train Station	Liverpool Street Station
Road Link	N/A
Airport	London City Airport

Serviced Offices

- **Price** : Â£330 pcm
- **Min Price** : Â£330 pcm
- **Min Term** : 1 mnths
- **Max Term** : 12 mnths