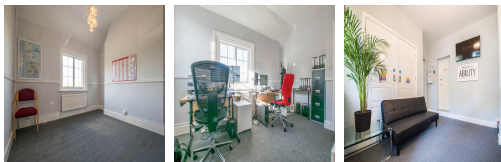


# Serviced Office Space UK

---

## Hertford Road

### Hertford SG12 9LH



This work centre is perfectly situated on Hertford road, with Ware Town Centre only being a four minute walk away. Ware Train Station is located just a short 12 minute walk from the business centre, and this provides access to London Liverpool Street in just 40 minutes. The business centre occupies a detached building which is accessed via a private driveway and bridge from the main road. There is an abundance of on-site car parking with 24 hour security, giving tenants that extra peace of mind.

This work centre offers stunning luxury boutique offices in a unique Grade II listed building. The offices have large windows, allowing plenty of natural light to flood in. The building has many unique features which add character, including exposed brick and ceiling beams. The work centre has many fantastic facilities such as an abundance of on-site car parking, a functioning kitchen and a reception and waiting area. The office space offers an idyllic place to work, with beautiful views of the surrounding countryside and riverside views. There are several rooms available with a range of sizes from 2-15 people.

## transport links

Underground	N/A
Train Station	Ware
Road Link	N/A
Airport	Stansted Airport

## Serviced Offices

---

- **Price** : Â£280 pcm
- **Min Price** : Â£280 pcm
- **Min Size** : 1 wkstns
- **Max Size** : 10 wkstns
- **Total Size** : 72 wkstns
- **Min Term** : 12 mnths
- **Max Term** : 90 mnths