

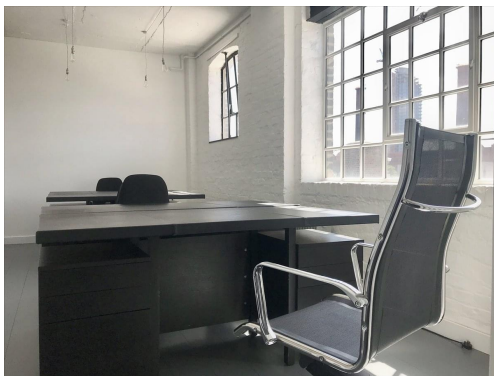
Serviced Office Space UK

79-89 Lots Road

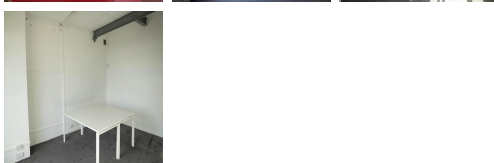
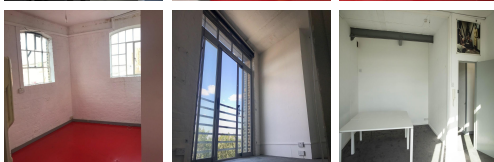
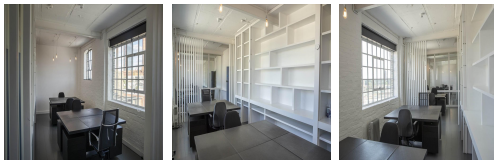
London SW10 0RN



This centre is located in the heart of London, placing tenants and their teams in a well-connected and easily accessible location. The centre is a five-minute walk from Imperial Wharf Train Station, which offers connections to Shepard's Bush, Stratford and Clapham Junction. Fulham Broadway tube is just a short seven-minute walk from the workspace. The fantastic transport links make the workspace very accessible for commuters. Many restaurants, cafes, shopping centres, and other local amenities are close to this centre.



The beautifully designed office spaces empower teams and companies for growth with high ceilings and large windows that provide natural lighting. The building used to be an ironworks factory, and now it hosts many creatives across different disciplines of fashion, interior design and photography. The workspace has many fantastic facilities, including 24-hour access and security, secure parking, and a functioning kitchen. The centre has everything the client company needs to thrive and expand. This building is a wonderland for all things digital – providing an ever-expanding hub of creatives with never-ending networking opportunities.



transport links

Underground	Fulham Broadway
Train Station	Victoria Station
Road Link	N/A
Airport	London City Airport

Serviced Offices

- **Price** : £350 pcm
- **Min Price** : £350 pcm
- **Min Size** : 2 wkstns
- **Max Size** : 16 wkstns
- **Total Size** : 16 wkstns
- **Min Term** : 1 mnths
- **Max Term** : 12 mnths