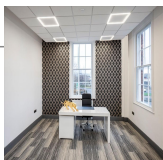
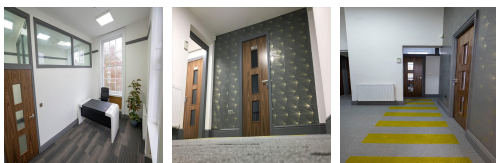
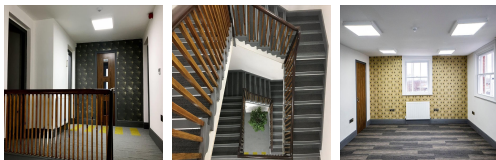


Serviced Office Space UK

1A George Street

Wolverhampton WV2 4DP



This office space is in the heart of the city, Wolverhampton, situated on the ring road. It is very accessible by car, with secure car parking located nearby. There are many cafes and places to grab lunch or a coffee during work breaks. There are numerous places to eat, drink and relax after work hours. The city is a green area located just down the road from the workspace, ideal for lunch breaks on those long, hot summer days. Located a short 13-minute walk from Wolverhampton Station, this work centre is very accessible by both road and rail.

This building offers a self-contained office space that is newly refurbished to a high standard. The building is Grade II listed, rich in history and dates back to the 19th Century. The work centre puts a modern spin on the traditional buildings with all the necessary facilities that a modern business requires. The luxury and beautiful work centre offers serviced office space and virtual offices. The building offers excellent amenities like 24-hour security and access, private meeting rooms and WiFi. These stylish and charming offices are in a prestigious location and are easily accessible. This office space is exempt from VAT.

transport links

Underground	N/A
Train Station	Wolverhampton
Road Link	N/A
Airport	Wolverhampton Halfpenny Green Airport

Virtual Office

- **Price** : £35 pcm
- **Min Price** : £35 pcm
- **Min Term** : 1 mnths
- **Max Term** : 12 mnths