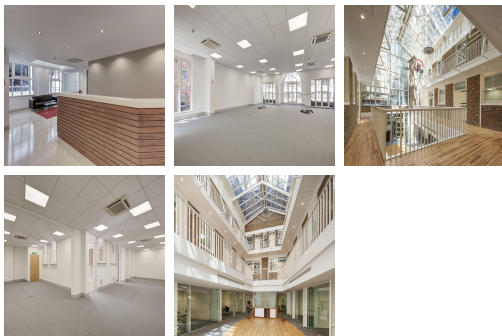
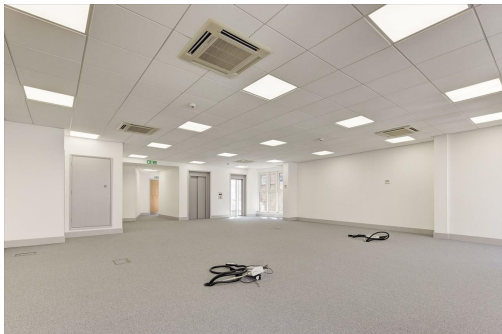


Serviced Office Space UK

London SW1H 9EU



On the border between Westminster and Victoria, this building is located next to Saint James's Park Tube station, and thus within a few hundred metres of the beautiful Saint James's park. Overground stations such as Victoria, Waterloo and Charing Cross are all within a short walk or cycle. Aside from the fantastic transport links, the work space is nearby to a variety of eateries and places to drink. This includes well-known chains such as Pizza Express and Starbucks as well as other independent options. With everything on the doorstep of this business centre there are also many recreational activities around the corner.

This converted stableyard office building is truly one of a kind. Situated within a one-minute walk from Saint James's Park underground station, this is extremely accessible by public transport. The space offers flexible office spaces ranging from 20 to 100 plus desks which could be ideal as a company HQ, for both medium sized and larger companies. The centre boasts plenty of natural light and a beautiful atrium. Contained within the building are a number of fantastic amenities including kitchen/breakout space, meeting rooms, showers and bike storage. Business support such as legal or HR is possible on request.

transport links

Underground	St. James's Park
Train Station	Victoria Station
Road Link	N/A
Airport	London City Airport

Serviced Offices

- **Price** : £400 pcm
- **Min Price** : £400 pcm
- **Min Size** : 10 wkstns
- **Max Size** : 250 wkstns
- **Total Size** : 250 wkstns
- **Min Term** : 6 mnths
- **Max Term** : 60 mnths