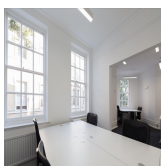
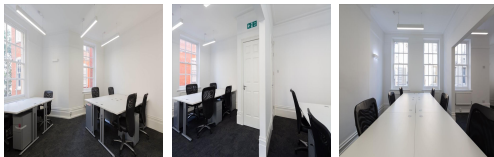


# Serviced Office Space UK

---

## 11-13 Broadcourt

London WC2B 5PY



The centre is based in the iconic Covent Garden, giving tenants an enviable central London location. Tenants can have endless dining, drinking and retail options throughout this location. Covent Garden tube station is just a two-minute walk from the centre and has the Piccadilly Line. Alternatively, Leicester Square is a six-minute walk and offers Northern Line access. The regional transport links are also excellent and provide all prospective tenants with a range of frequent and convenient services throughout the area.

This stylish centre offers 1,200 square feet of self-contained space, allowing tenants a sense of independence for their business. The centre is in a handsome Grade II listed building. The centre has recently undergone significant refurbishment and is now at a high standard and maintains its original period features. The space is divided into five suites and boasts its reception area, kitchen facilities and breakout space. These exceptionally well-equipped and fully functional private offices and collaborative team suites make productive, and the visitors are impressed with the building's vibrant working atmosphere and an impressive degree of corporate prestige.

### transport links

<b>Underground</b>	Covent Garden
<b>Train Station</b>	Euston Station
<b>Road Link</b>	N/A
<b>Airport</b>	London City Airport

### Serviced Offices

---

- **Price** : Â£700 pcm
- **Min Price** : Â£700 pcm
- **Min Size** : 21 wkstns
- **Max Size** : 21 wkstns
- **Total Size** : 21 wkstns
- **Min Term** : 3 mnths
- **Max Term** : 36 mnths