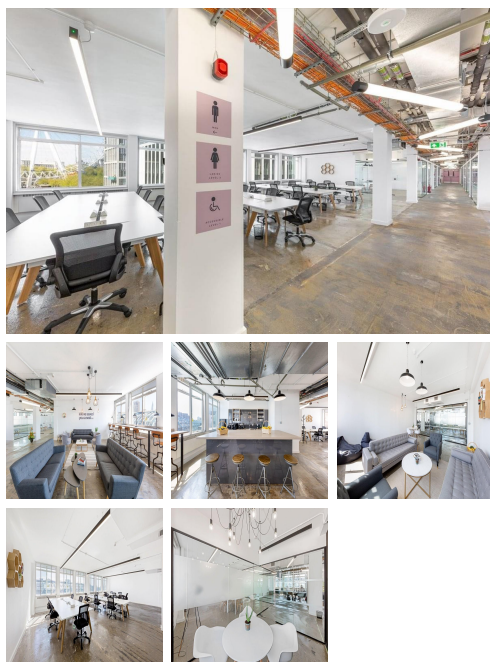


Serviced Office Space UK

Waterloo Station

London SE1 7NQ



Tenants will spend their working day in a space that is moments away from both Waterloo Station and the South Bank – highlighting both its easy access to some of London’s best amenities and its excellent transport links. Tenants will have a vast array of dining, retail and leisure options at their fingertips, and can enjoy a stroll along the South Bank on their lunchtimes. They will also enjoy unrivalled transport links, with Waterloo station being mere meters away and also one of London’s biggest transport hubs. As well as a range of rail services on hand, the station is also served by the Bakerloo, Northern, Jubilee and Waterloo & City lines underground lines. Alternatively, it is just a quick hop across Waterloo Bridge for Circle and District Line access at Embankment or Temple.

Just a stone’s throw from Waterloo Station, this space consists of 7,500sqft of flexible workspace with both co-working space and private suites available. Private office range from 7-person up to 19-person spaces, making it an exciting proposition for both smaller and medium-sized businesses to flourish in. With 26 workstations available in the open plan area, it is also fully viable for freelancers and start-ups. Tenants will enjoy a range of amenities, with the space having a variety of meeting rooms for tenants to take advantage of – 4 person right up to 10 person spaces. The space is also accessible 24 hours a day, allowing you to set your own work hours. Other amenities include breakout spaces, free coffee and tea, event space and kitchen facilities.

transport links

Underground	Waterloo
Train Station	London Bridge Underground Station
Road Link	N/A
Airport	London City Airport

Coworking Spaces