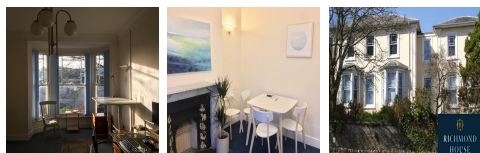
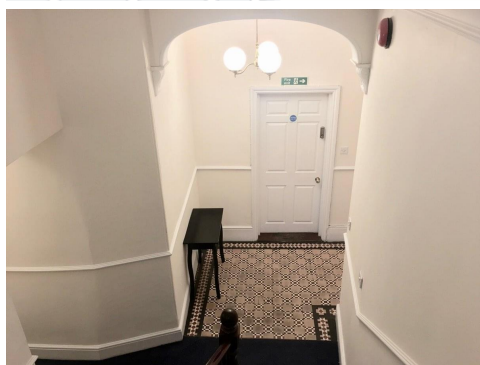


# Serviced Office Space UK

## 37 Edward Street

Truro TR1 3AJ



The centre is located in the outskirts of Truro city centre on Edward Street. Just a stone's throw from Victoria Gardens, tenants can spend their lunchtimes having a stroll through the green space. With a wide range of eateries, drinking holes and cafes nearby, tenants will also have plenty of choices for lunch or for post-work entertainment. Truro city centre is also just a couple of minutes walk from your door, with lots of retail options to explore. In terms of transport, Truro train station is less than 10-minutes walk from the centre. The station offers routes to destinations throughout Cornwall, including Penzance, St Austell and Newquay, and also has direct services into London Paddington – ideal for any business meetings.

Based in Truro, this centre is housed within an impressive Georgian building and totals nearly 3,000sqft in space. Comprised of 18 work spaces, the centre also has an Old Library that has been transformed into a unique lounge and meeting room space. The centre delivers a professional workspace that also boasts a homely feel, with tenants able to come and go as they please and make use of all communal facilities. The building's impressive exterior is matched inside and will be sure to impress any visiting clients. Suites range from 120sqft up to 250sqft, making it an ideal proposition for smaller businesses, and the price is inclusive of rent, high speed WiFi, electricity, water, insurance, cleaning and maintenance and use of communal facilities. Other amenities include high spec kitchen facilities, a lovely terraced garden, showers and super quick internet throughout.

### transport links

Underground	N/A
Train Station	Truro
Road Link	N/A
Airport	Perranporth Airfield

### Serviced Offices

- **Price :** Â£345 pcm
- **Min Price :** Â£345 pcm
- **Max Size:** 6 wkstns