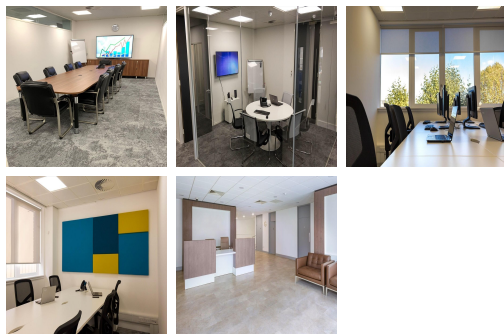
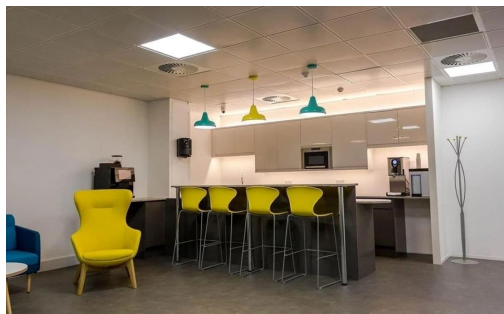


Serviced Office Space UK

333 Edgware Road

London NW9 6TD



The centre is in London, a lively area undergoing regeneration. London offers a wealth of shops, eateries and drinking holes for tenants to take advantage of, all within a few minutes walk of the office. There are two-way to access this place by car or public transport such as train, uber, taxi, and metro bus. Colindale underground station - served by the Northern Line - is around seven minutes walk from the station. Hendon Thameslink station is also just a mile from the door. The M1 and Brent shopping centre is also just an eight-minute drive.

This exciting modern workspace offers a flexible office solution with amenities. The space has high-quality fixtures, private phone booths, modern kitchen facilities and a well-furnished dedicated breakout area. The centre also benefits from lots of natural light for a productive atmosphere. The centre boasts a range of meeting rooms that accommodate teams from 2 up to 16 people. The meeting rooms also come with hot and cold beverages and snacks. Tenants and their clients can help themselves to complimentary bean-to-cup lattes, cappuccinos and other hot drinks. The centre is accessible 24 hours a day so clients can work flexibly.

transport links

Underground	Colindale Station
Train Station	Euston Station
Road Link	N/A
Airport	Heathrow Airport

Virtual Office

- **Price** : Â£75 pcm
- **Min Price** : Â£75 pcm
- **Min Term** : 12 mnths
- **Max Term** : 24 mnths