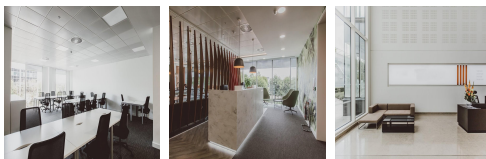
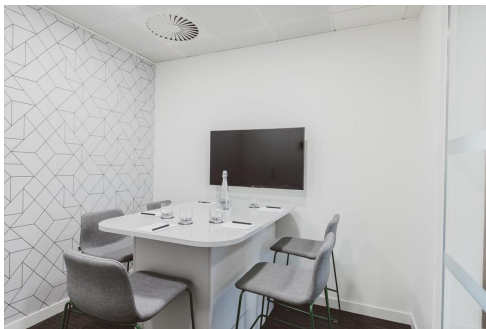


Serviced Office Space UK

Uxbridge UB11 1FE



The centre is at the heart of Uxbridge. Tenants will take advantage of the surrounding park, which offers a perfect escape from the office during lunchtime. With neighbours including Apple, Canon, Marks and Spencer and IMG, the area boasts of restaurants, cafes, gyms and even a golf course close by – giving clients plenty of options for lunchtime. In terms of transport, the centre is well-connected. Hayes and Harlington rail station is just a 10-minute drive (30-minute walk) and offers direct services to London Paddington. The station is also part of the new Elizabeth Line, providing excellent access to central London. Alternatively, Uxbridge underground station is just a 10-minute drive and the Metropolitan and Piccadilly Lines. Heathrow Airport is also just a six-minute drive.

This centre consists of 24,000 square feet of prime, Grade A space. This modern, flexible environment comes fully furnished and boasts relaxing breakout spaces and professional meeting rooms. Tenants will undoubtedly be impressed with the centre's grand entrance, including a four-storey atrium and floor-to-ceiling windows, enabling lots of natural light within the working environment. The centre also has plenty of car parking space, including car charging stations, recycling stores, dedicated shower facilities and solar panels. This space is warm and welcoming, so clients can feel at home while at work.

transport links

Underground	Uxbridge Underground Station
Train Station	West Drayton Station
Road Link	N/A
Airport	Heathrow Airport

Serviced Offices

- **Price** : £300 pcm
- **Min Price** : £300 pcm
- **Min Size** : 2 wkstns
- **Max Size** : 409 wkstns
- **Total Size** : 409 wkstns
- **Min Term** : 3 mnths
- **Max Term** : 36 mnths